

Milwaukee Metropolitan Sewerage District Mercury Minimization Program Annual Report

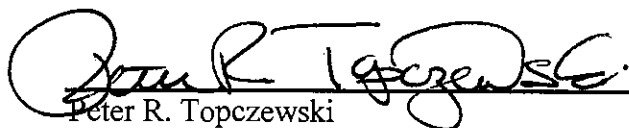
Treatment Plant	WPDES Permit	Mercury Effluent Limit
Jones Island	WI-0036820-02-0	None ¹
South Shore	WI-0036820-02-0	None ¹

1. Although no limit applies now, the permit requires monthly influent and effluent sampling.

Contact Person

Thomas A. Nowicki, P.E.
Senior Industrial Waste Engineer
260 West Seeboth Street
Milwaukee, Wisconsin 53204-1446
414-225-2275 (voice)
414-272-0270 (fax)
tnowicki@mmsd.com

I have personally examined and am familiar with the information submitted in this document and attachments. Based upon my inquiry of the individuals immediately responsible for obtaining the information reported in this document, I believe that the submitted information is true, accurate, and complete.



Peter R. Topczewski
Water Quality Protection Manager

9/3/08

Date

Mercury Reduction Resources

1. Persons Implementing the Mercury Minimization Program

Tom Nowicki, Senior Industrial Waste Engineer
Andy Walloch, Sampling Supervisor-Point Sources
Sharon Mertens, Laboratory Manager
Sheila Charnon, Assistant Small Woman Minority Business Enterprise Coordinator and
Household Hazardous Waste Program Manager
Starr Pentek-Schuetz, Graphic Designer
Sampling Staff
Analytical Staff

2. Budget August 2007 to August 2008

From August 4, 2007, to August 3, 2008, the Mercury Minimization Program, other than household hazardous waste, cost \$6,074. The following table provides details. This amount is consistent with the 2006 to 2007 period.

For household hazardous waste, the total budget for calendar year 2008 is \$1.1 million, which includes \$35,000 for advertising, \$4,000 for the disposal of mercury other than lamps, and \$9,000 for lamp disposal.

3. Budget August 2008 to August 2009

For the period August 2007 to August 2008, the primary work will be inspecting dental offices. For this work, estimated effort is 150 hours and \$5,739. General mercury reduction work will be limited to generally maintaining knowledge of mercury issues. For this work, estimated effort is 20 hours and \$765. If grant funding or summer students become available, then work may increase to include schools or automobile dismantlers, depending upon the circumstances.

For household hazardous waste, for calendar year 2009, the proposed total budget is \$1.0 million, which includes \$43,000 for advertising, \$5,000 for the disposal of mercury other than lamps, and \$9,000 for lamp disposal.

4. Collaboration with Other Governments and Non-governmental Organizations

One of the District's permanent collection sites for household hazardous waste is located at a City of Milwaukee, Department of Public Works, collection site for yard waste and other non-hazardous special waste. The Waukesha County household hazardous waste collection program uses two of the permanent collection sites used by the District: Menomonee Falls and Franklin.

The University of Wisconsin Extension and the District organized a workshop to compare and contrast programs for reducing the discharge of dental amalgam to sewerage systems. Sixty people from various municipalities and states participated. The workshop occurred on April 30, 2008.

5. Mercury Collection Programs

The following table shows the mercury collection opportunities available within the District's service area. For the District's household hazardous waste collection program, an announcement follows.

**Mercury Reduction Program Budget
Other than Household Hazardous Waste**

August 4, 2007 to August 3, 2008

Labor Program	Position	Hours	Amount (\$)
Dental Amalgam Reduction	Senior Industrial Waste Engineer	104	3,912
	Graphic Designer	4	107
	Subtotal	108	4,019
General Mercury Reduction	Senior Industrial Waste Engineer	56	2,055
	Grand Total	164	6,074

Mercury Collection Opportunities Within the Milwaukee Metropolitan Sewerage District's Service Area

Area Served	Type of Material	Availability	Operator
Milwaukee County	Household hazardous waste	2 permanent sites open three days per week 1 permanent site open two days per week 7 days of collection at temporary sites throughout the County. An announcement for the 2008 program follows.	Milwaukee Metropolitan Sewerage District 414-225-2066 V2.mmsd.com/HHW.aspex
Ozaukee County (Mequon, Thiensville)	Not applicable	No publicly funded program now. Ozaukee County recommends residents take waste to the Veolia Environmental Services facility in Port Washington, which will charge the individual for disposal.	Ozaukee County 262-243-8998 www.co.ozaukee.wi.us/hhw/Index.htm
Racine County (Caddy Vista)	Not applicable	None	None
Washington County (Germantown)	Household hazardous Waste Very small quantity generator waste	September 26 and 27, 2008 For disposal at other times, Washington County recommends taking waste to the Veolia Environmental Services facility in Port Washington, which will charge the individual for disposal	Washington County 262-335-4800 http://www.co.washington.wi.us/uploads/docs/LCD_CleanSweep2008HazardousWasteListing_2.pdf
Waukesha County (Brookfield, Butler, Elm Grove, Menomonee Falls, Muskego, New Berlin)	Household hazardous waste	4 permanent sites, with schedules that vary from three days per week to one day per month, plus 5 days of collection at temporary sites throughout the county	Waukesha County 262-896-8300 www.waukeshacounty.gov/page.aspx?SetupMetaId=11136&id=11472
All	Any mercury waste from any type of source	On demand, including drop-off, mail-in, and collection service Individual charge for disposal	Mercury Waste Solutions 21211 Durand Avenue Union Grove 262-878-2599 Veolia Environmental Services W124 N9451 Boundary Road Menomonee Falls 262-255-6655 Veolia Environmental Services 1275 Mineral Spring Drive Port Washington 262-243-8998 (These facilities are listed as examples. Other providers of these services may be available. Listing does not imply endorsement.)

Influent, Effluent, and Biosolids Mercury Concentrations and Local Limit

Effluent sampling using Method 1669 for sampling and Method 1631 for analysis commenced in September 2003. Table 3-1 shows all of the influent and effluent results since September 2003. Graphs of the results follow the table.

Jones Island produces Milorganite, which is a heat-dried product distributed throughout the United States and Canada. South Shore produces Agri-Life, which is a liquid digested product distributed to farms in the local area. Also, South Shore produces Agri-Life Filter Cake, a digested, de-watered, solid product distributed to farms in the local area. South Shore produces much more liquid product than filter cake product. Pollutant concentrations are similar in the Agri-Life liquid and filter cake products because results are reported on a dry-weight basis.

Table 3-2 shows concentrations in Milorganite and Agri-Life. This table uses a September 2003 starting date to be consistent with the starting date for low-level effluent sampling.

Biosolids sample results are not necessarily a function of pollutant loadings to the individual treatment plants. Jones Island and South Shore are connected by a biosolids pipeline. Biosolids may move in either direction, depending upon product demand. Most of the time, some or all of the biosolids from South Shore move to Jones Island to maximize Milorganite production.

The sample results show mixed and confounding outcomes. At both Jones Island and South Shore, influent concentration and mass show a decreasing trend. In contrast, effluent concentration and mass are stable or increasing. Both Agri-Life and Milorganite show weak increasing trends.

Table 3-3 shows the laboratories used.

Table 3-4 shows the local limit.

Table 3-1
Influent and Effluent Concentrations
 (ng/L)

Date	Jones Island		South Shore	
	Influent	Effluent	Influent	Effluent
9/17/3	87	3.0	No Result	2.1
10/6/3	62	2.1	160	2.0
11/5/3	231	3.3	322	3.1
12/2/3	23.8	1.5	97	1.8
1/12/4	38	1.7	230	2.2
2/4/4	72	2.7	220	2.1
3/3/4	72	2.0	100	3.2
4/7/4	54	2.2	210	5.2
5/5/4	100	1.9	240	1.8
6/7/4	No result	1.2	480	1.1
7/14/4	140	2.6	100	1.3
8/2/4	120	1.4	110	1.5
9/8/4	230	2.1	250	2.0
10/13/4	590	1.8	180	2.8
11/3/4	70	2.0	380	2.9
12/7/4	60	3.7	620	2.4
1/12/5	150	2.5	250	1.8
2/1/5	120	2.2	220	1.5
3/7/5	85	1.4	220	2.0
4/11/5	100	1.4	100	2.5
5/9/5	110	1.3	84	1.6
6/8/5	84	1.4	110	1.7
7/6/5	74	2.5	89	1.5
8/1/5	64	1.7	57	1.6
9/1/5	67	1.5	130	1.9
10/3/5	370	1.9	190	1.5
11/2/5	52	2.1	150	2.7
12/1/5	110	2.8	51	1.7
1/16/6	47	1.7	84	1.5
2/15/6	66	1.9	130	1.4
3/8/6	140	1.4	100	1.7
4/4/6	76	2.8	14	5.5
5/4/6	100	1.2	160	2.5
6/7/6	87	3.7	110	1.7
7/11/6	31	2.3	39	2.5
8/9/6	56	3.7	150	3.7
9/11/6	69	1.4	120	1.5
10/4/6	20	3.4	40	1.6

Table 3-1
Influent and Effluent Concentrations
 (ng/L)

Date	Jones Island		South Shore	
	Influent	Effluent	Influent	Effluent
11/6/6	62	1.7	150	2.1
12/6/6	46	2.1	55	1.7
1/8/7	36	1.6	77	1.6
2/7/7	32	1.4	110	2.7
3/5/7	69	1.5	60	1.9
4/3/7	42	7.1	68	7.3
5/2/7	70	2.6	110	1.8
6/4/7	71	3.6	150	1.6
7/10/7	89	3.8	180	2.3
8/8/7	51	1.8	79	2.8
8/23/7	No sample	2.4	No sample	No sample
9/11/7	62	4.7	98	4.2
10/3/7	180	1.5	69	2.0
11/5/7	61	1.8	74	1.6
12/4/7	41	1.1	56	0.83
1/9/8	26	2.2	19	2.2
2/5/8	40	2.7	120	1.9
3/3/8	46	5.2	91	1.3
4/1/8	34	4.1	33	4.7
5/5/8	34	0.87	58	1.1
6/4/8	46	1.1	37	1.5

Table 3-2
Biosolids Concentrations
(mg/kg)

Milorganite		Agri-Life	
Date	Concentration	Date	Concentration
9/7/3	0.43	9/8/3	2.0
9/14/3	0.59		
9/21/3	0.97		
9/28/3	0.29		
10/5/3	0.33	10/6/3	0.8
10/12/3	0.25		
10/19/3	0.35		
10/26/3	0.46		
11/2/3	0.41	11/3/3	0.9
11/9/3	0.56		
11/16/3	0.41		
11/23/3	0.86		
11/30/3	0.28		
12/7/3	0.29	12/8/3	1.2
12/14/3	0.41		
12/21/3	0.41		
12/28/3	0.41		
1/4/4	0.37	1/7/4	1.4
1/11/4	0.44		
1/18/4	0.24		
1/24/4	0.31		
2/1/4	0.43	2/2/4	1.6
2/8/4	0.33		
2/15/4	0.29		
2/22/4	0.33		
2/29/4	0.31		
3/7/4	0.36	3/1/4	0.9
3/14/4	0.37		
3/21/4	0.25		
3/28/4	0.32		

Table 3-2
Biosolids Concentrations
(mg/kg)

Milorganite		Agri-Life	
Date	Concentration	Date	Concentration
4/4/4	0.40	4/6/4	1.6
4/11/4	0.40		
4/18/4	0.35		
4/25/4	0.26		
5/2/4	0.27	5/3/4	2.1
5/9/4	0.30		
5/16/4	0.34		
5/23/4	0.44		
5/30/4	0.34		
6/6/4	0.50	6/7/4	<0.7
6/13/4	0.40		
6/20/4	0.30		
6/27/4	0.30		
7/4/4	0.31	7/7/4	1.2
7/11/4	0.41		
7/18/4	0.48		
7/25/4	0.43		
8/1/4	0.31	8/2/4	1.3
8/8/4	0.20		
8/15/4	0.13		
8/22/4	0.09		
8/29/4	0.35		
9/5/4	0.35	9/7/4	1.2
9/12/4	0.40		
9/19/4	0.34		
9/26/4	0.24		
10/3/4	0.25	10/4/4	2.4
10/10/4	0.28		
10/17/4	0.38		
10/24/4	0.37		
10/31/4	0.38		
11/7/4	0.45	11/1/4	2.1
11/14/4	0.29		
11/21/4	0.38		
11/28/4	0.17		

Table 3-2
Biosolids Concentrations
(mg/kg)

Milorganite		Agri-Life	
Date	Concentration	Date	Concentration
12/5/4	0.23	12/6/4	2.0
12/12/4	0.40		
12/19/4	0.35		
12/26/4	0.30		
1/2/5	0.17	1/3/5	0.7
1/9/5	0.36		
1/16/5	0.29		
1/23/5	0.21		
1/30/5	0.22		
2/6/5	0.30	2/8/5	1.3
2/13/5	0.23		
2/20/5	0.13		
2/27/5	0.20		
3/6/5	0.13	3/7/5	0.7
3/13/5	0.19		
3/20/5	0.26		
3/27/5	0.27		
4/3/5	0.60	4/4/5	1.4
4/10/5	0.26		
4/17/5	0.28		
4/24/5	0.29		
5/1/5	0.33	5/2/5	0.7
5/8/5	0.40		
5/15/5	0.32		
5/22/5	0.33		
5/29/5	0.39		
6/5/5	0.23	6/6/5	0.6
6/12/5	0.33		
6/19/5	0.43		
6/26/5	0.43		
7/3/5	0.35	7/5/5	2.1
7/10/5	0.39		
7/17/5	0.27		
7/24/5	0.26		
7/31/5	0.26		

Table 3-2
Biosolids Concentrations
(mg/kg)

Milorganite		Agri-Life	
Date	Concentration	Date	Concentration
8/7/5	0.24	8/1/5	1.2
8/14/5	0.28		
8/21/5	0.21		
8/28/5	0.24		
9/4/5	0.29	9/6/5	2.0
9/11/5	0.34		
9/18/5	0.23		
9/25/5	0.30		
10/2/5	0.21	10/3/5	2.7
10/9/5	0.31		
10/16/5	0.28		
10/23/5	0.23		
10/30/5	0.36		
11/6/5	0.26	11/7/5	0.7
11/13/5	0.25		
11/20/5	0.20		
11/27/5	0.39		
12/4/5	0.39	12/5/5	2.6
12/11/5	0.31		
12/18/5	0.25		
12/25/5	0.25		
1/1/6	0.37	1/3/6	0.7
1/8/6	0.38		
1/15/6	0.31		
1/22/6	0.42		
1/29/6	0.48		
2/5/6	0.33	2/6/6	1.0
2/12/6	0.34		
2/19/6	0.39		
2/26/6	0.31		
3/5/6	0.43	3/6/6	0.8
3/12/6	0.48		
3/19/6	0.38		
3/26/6	0.38		

Table 3-2
Biosolids Concentrations
(mg/kg)

Milorganite		Agri-Life	
Date	Concentration	Date	Concentration
4/2/6	0.38	4/3/6	1.2
4/9/6	0.36		
4/16/6	0.40		
4/23/6	0.34		
4/30/6	0.30		
5/7/6	0.36	5/1/6	1.1
5/14/6	0.33		
5/21/6	0.25		
5/28/6	0.27		
6/4/6	0.36	6/5/6	1.6
6/11/6	0.38		
6/18/6	0.31		
6/25/6	0.35		
7/2/6	0.38	7/5/6	1.4
7/9/6	0.31		
7/16/6	0.35		
7/23/6	0.30		
7/30/6	0.25		
8/29/6	0.35	8/8/6	0.6
9/3/6	0.22	9/5/6	0.9
9/10/6	0.31		
9/17/6	0.31		
9/24/6	0.30		
10/1/6	0.24	10/2/6	1.6
10/8/6	0.36		
10/15/6	0.20		
10/22/6	0.46		
10/23/6	0.28		
10/29/6	0.32		
11/5/6	0.35	11/6/6	2.8
11/12/6	0.31		
11/19/6	0.35		
11/26/6	0.40		
12/3/6	0.24	12/4/6	0.9
12/10/6	0.31		
12/17/6	0.35		
12/24/6	0.38		
12/31/6	0.38		

Table 3-2
Biosolids Concentrations
(mg/kg)

Milorganite		Agri-Life	
Date	Concentration	Date	Concentration
1/7/7	0.38	1/8/7	1.0
1/14/7	0.32		
1/21/7	0.15		
1/28/7	0.41		
2/4/7	0.32	2/5/7	1.0
2/11/7	0.31		
2/18/7	0.32		
2/25/7	0.27		
3/4/7	0.34	3/5/7	1.6
3/11/7	0.30		
3/18/7	0.30		
3/25/7	0.21		
4/1/7	0.44	4/2/7	<0.17
4/8/7	0.28		
4/15/7	0.26		
4/22/7	0.28		
4/29/7	0.30		
5/6/7	0.25	5/7/7	1.2
5/13/7	0.33		
5/20/7	0.38		
5/27/7	0.32		
6/3/7	0.39	6/4/7	1.8
6/10/7	0.29		
No Production		7/9/7	1.5
		8/7/7	1.7
		9/4/7	1.4
10/14/7	0.49	10/1/7	1.8
10/21/7	0.53		
10/28/7	0.39		
11/4/7	0.49	11/5/7	1.5
11/11/7	0.47		
11/18/7	0.35		
11/25/7	0.54		
12/2/7	0.45	12/3/7	1.0
12/9/7	0.44		
12/16/7	0.38		
12/23/7	0.52		
12/30/7	0.46		

Table 3-2
Biosolids Concentrations
(mg/kg)

Milorganite		Agri-Life	
Date	Concentration	Date	Concentration
1/12/8	0.53	1/7/8	2.5
1/19/8	0.45		
1/26/8	0.46		
2/2/8	0.39	2/4/8	0.81
2/9/8	0.38		
2/16/8	0.43		
2/23/8	0.42		
3/1/8	0.39	3/3/8	1.4
3/8/8	0.42		
3/15/8	0.36		
3/22/8	0.42		
3/29/8	0.50		
4/5/8	0.52	4/7/8	3.9
4/12/8	0.37		
4/19/8	0.38		
4/26/8	0.44		
5/3/8	0.37	5/5/8	3.4
5/10/8	0.40		
5/17/8	0.28		
5/24/8	0.36		
5/31/8	1.3		
6/7/8	0.43	6/2/8	1.0
6/14/8	0.45		
6/21/8	0.70		
6/28/8	0.34		
7/5/8	0.37	7/7/8	0.94
7/12/8	0.41		
7/26/8	0.46		

**Table 3-3
Laboratories Used**

	Name	Address	Certification Number	Technique
Influent	Pace ¹	1241 Bellevue Street Green Bay, WI 54302	445134030	7470A or 1631E ²
Effluent	Pace ¹	1241 Bellevue Street Green Bay, WI 54302	445134030	1631E
Biosolids	Test America ^{3,4}	2417 Bond Street University Park, IL 60466	999580010	7471A
	Pace ^{1,4}	1241 Bellevue Street Green Bay, WI 54302	445134030	1631E

1. This laboratory was named En-Chem until mid-2005.

2. The method used depends upon the magnitude of the concentration. The reported result is for 1631E, except in cases where the concentration was higher than the range for which 1631E is calibrated.

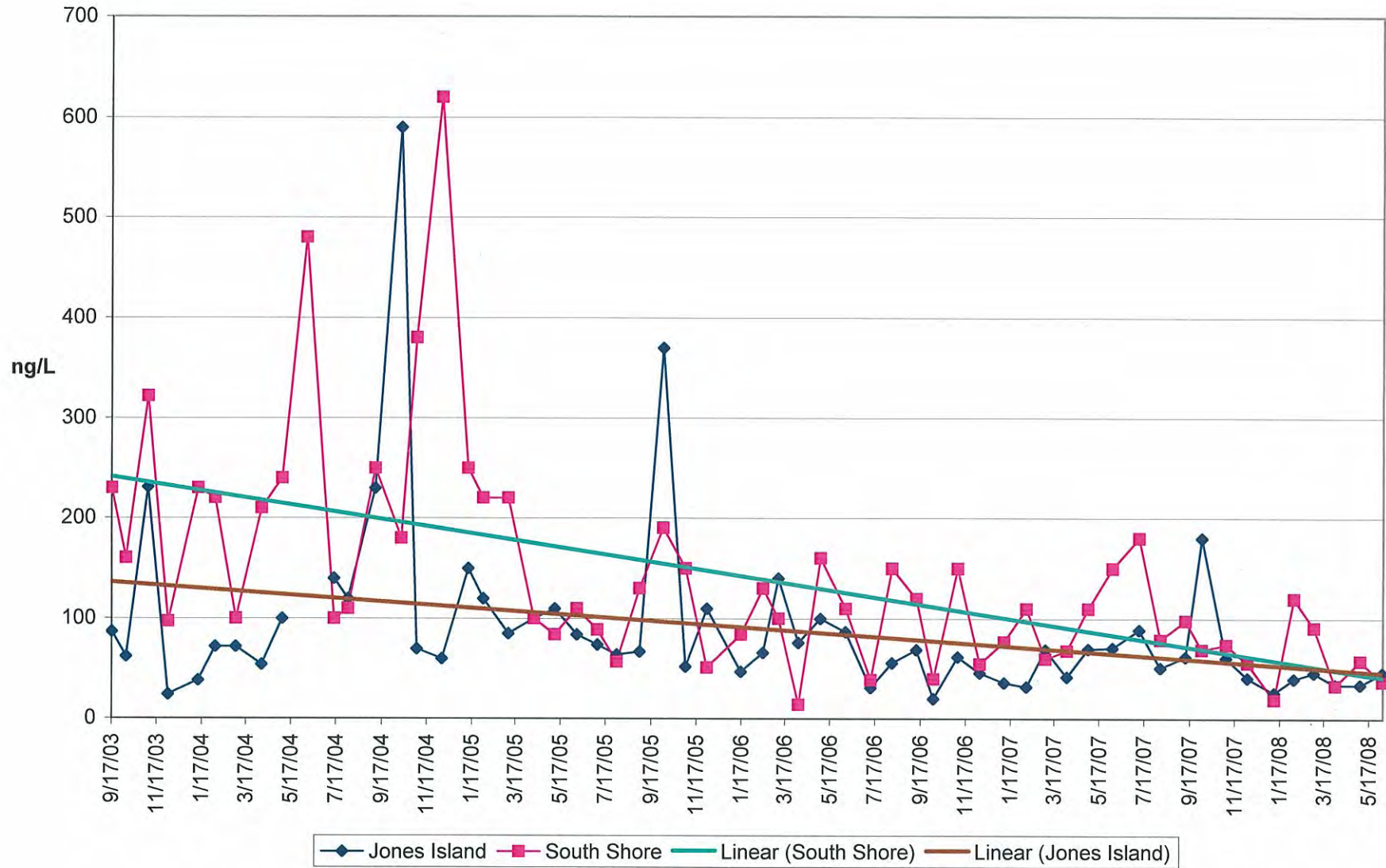
3. This laboratory was Severn Trent until mid-2007.

4. The laboratory used depends upon availability.

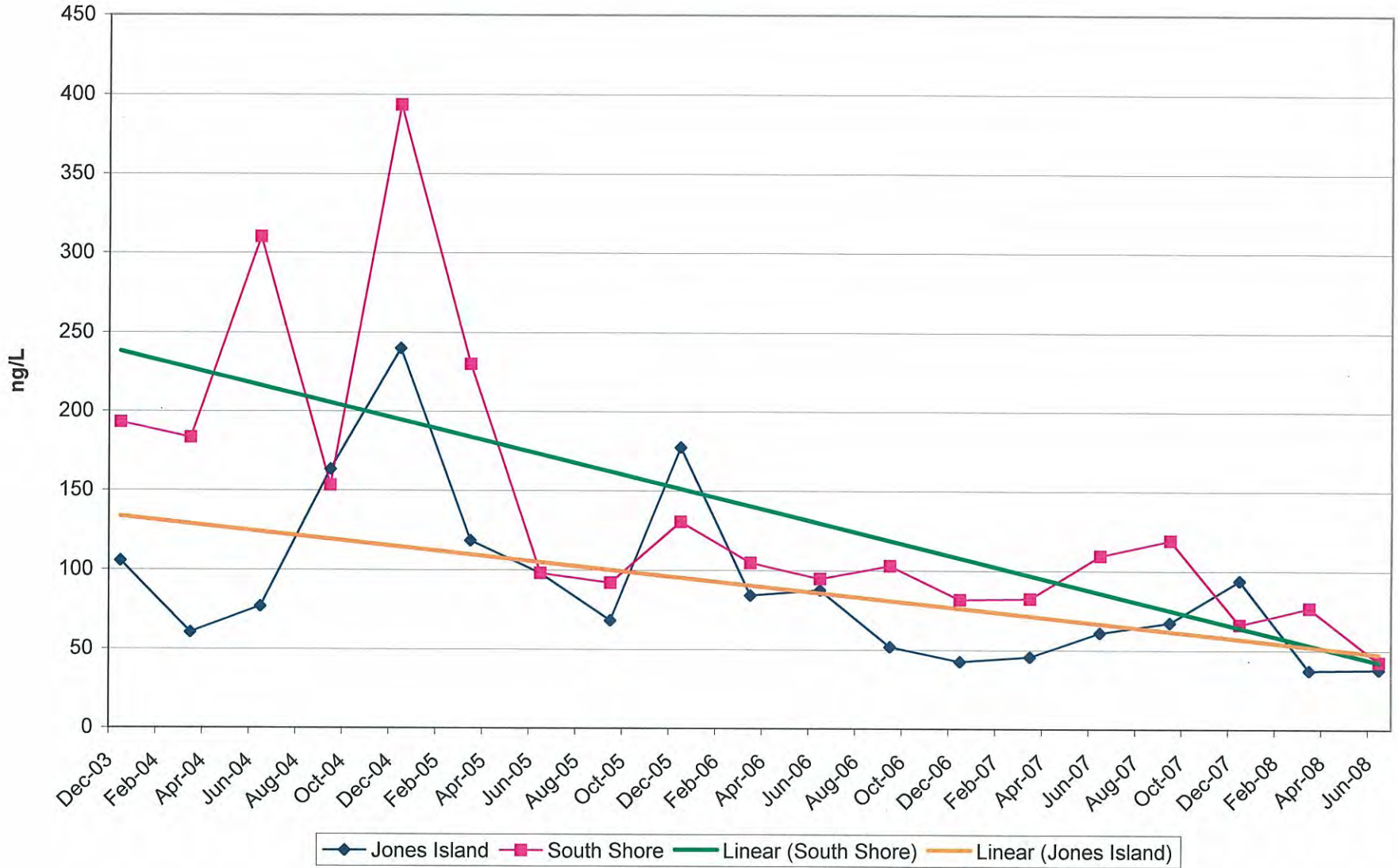
**Table 3-4
Mercury Limit in Sewer User Ordinance**

Treatment Plant	Limit
Jones Island	2.6 µg/L
South Shore	2.6 µg/L

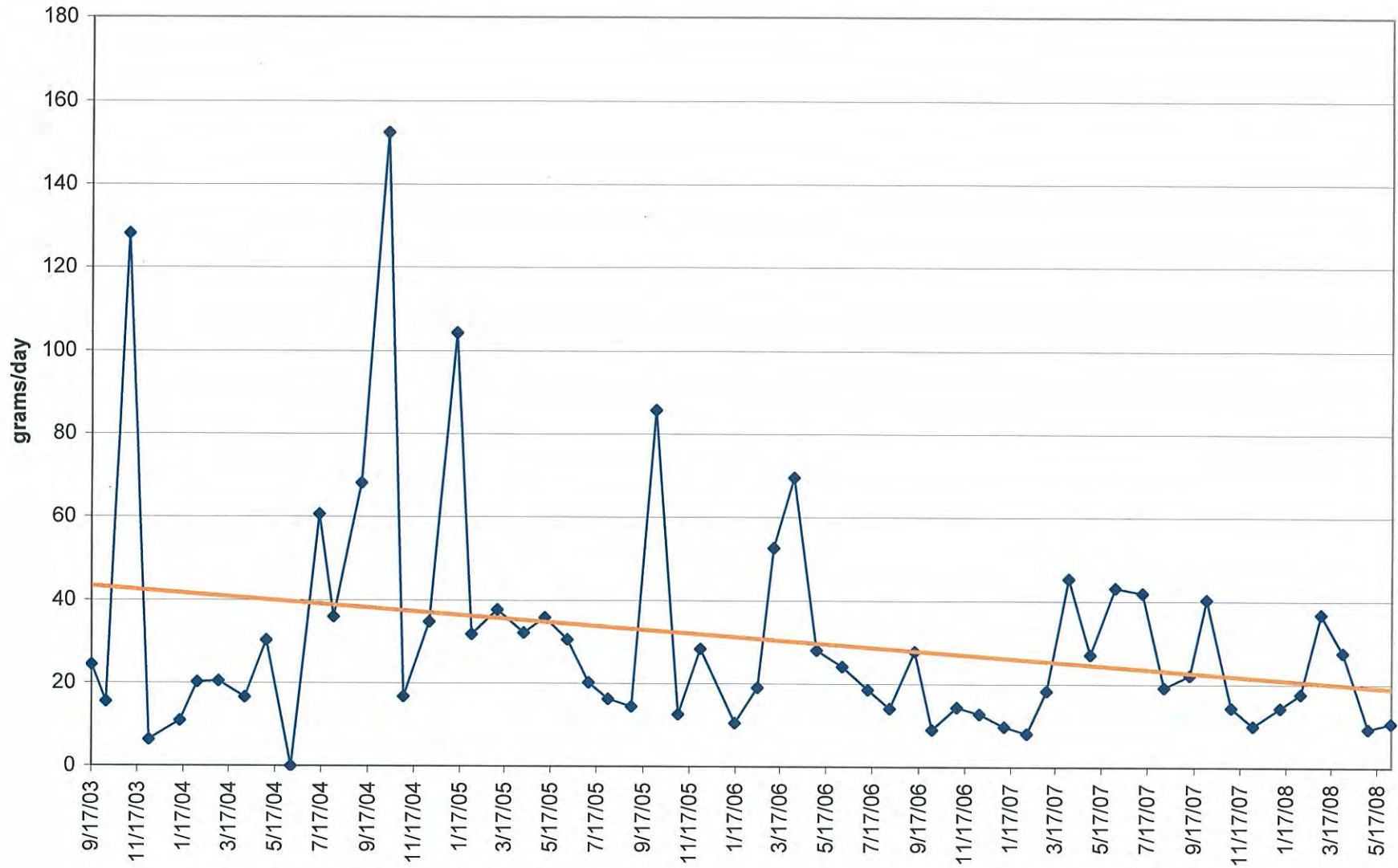
Influent Mercury



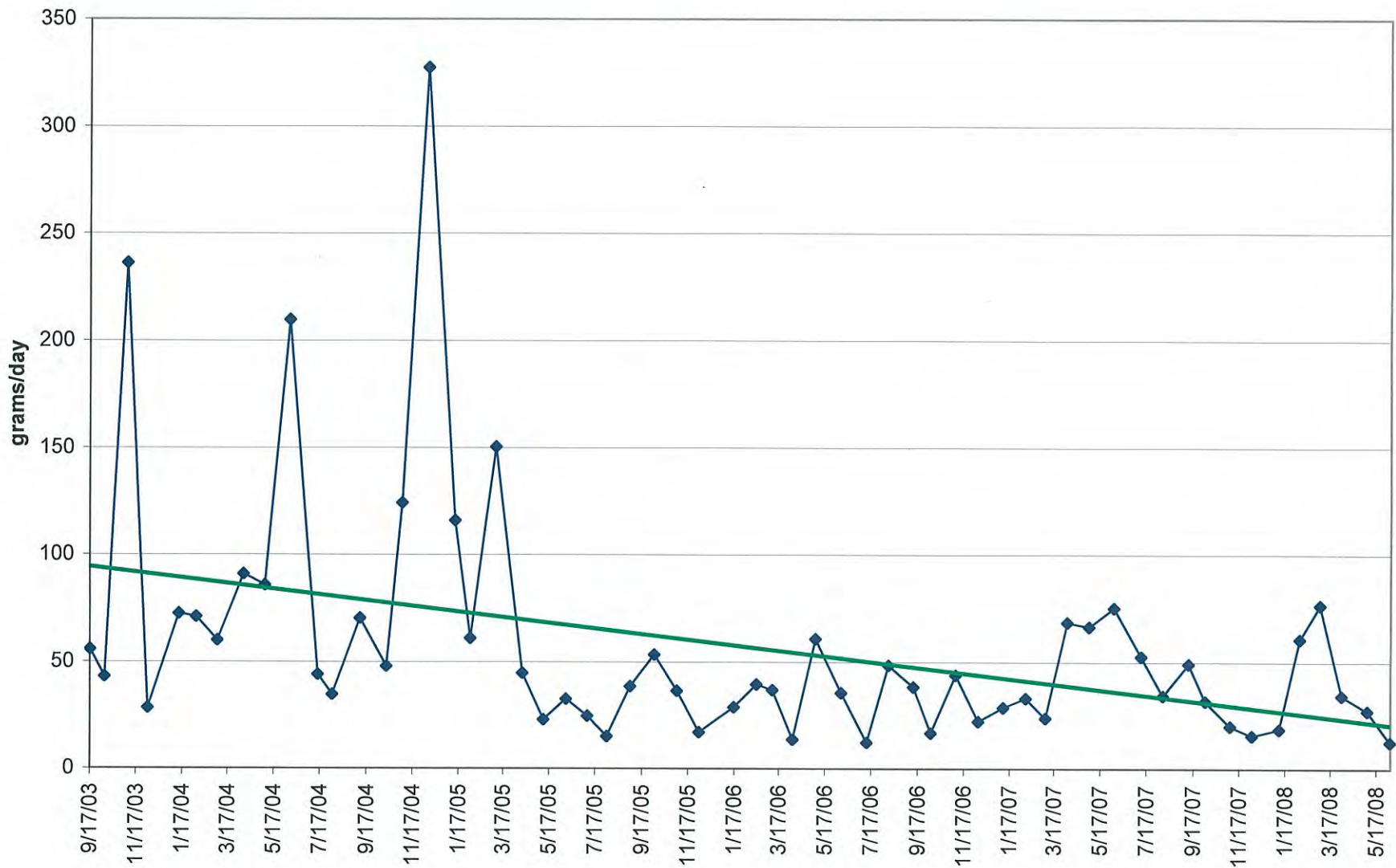
Influent Quarterly Averages



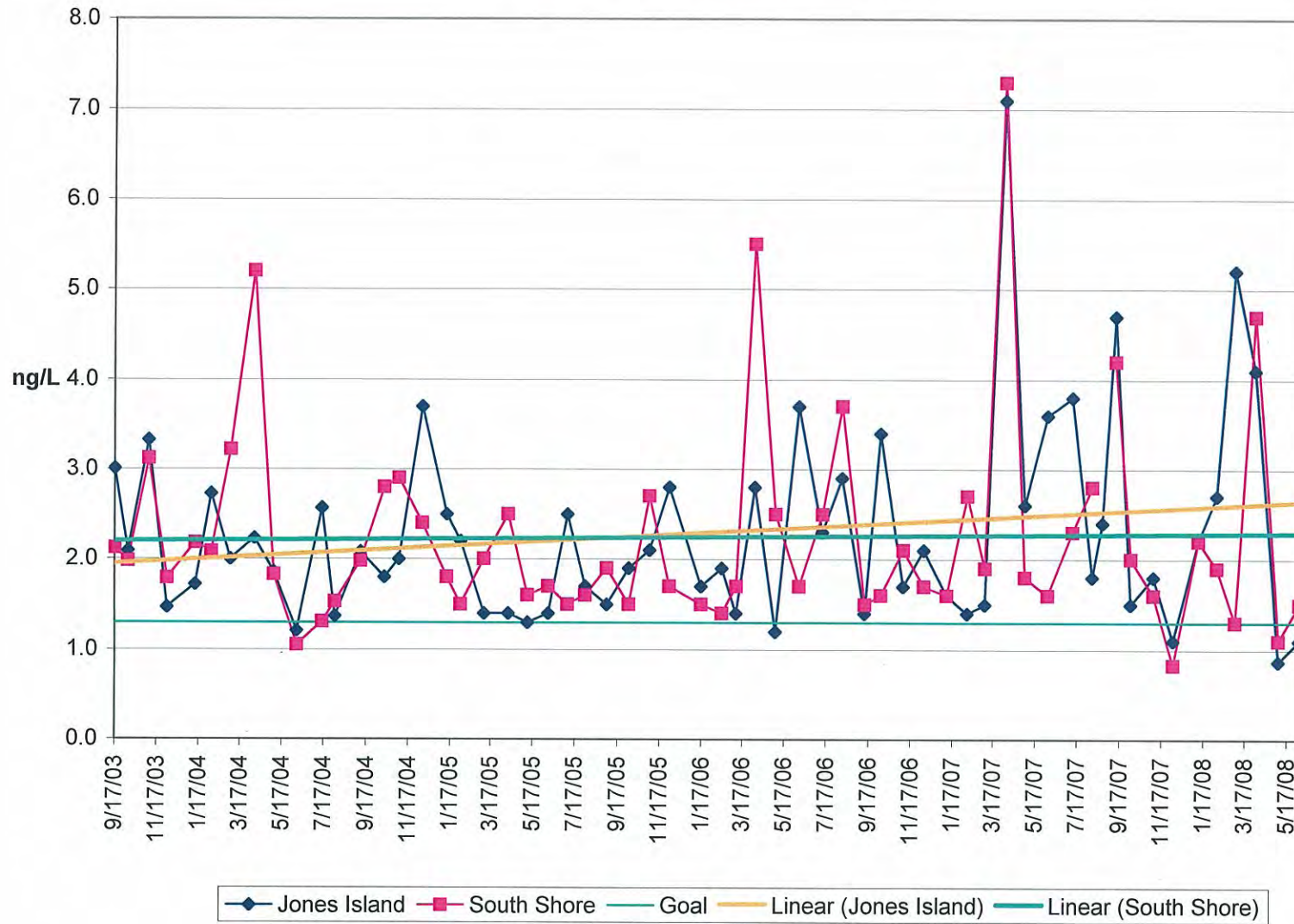
Jones Island Influent Mercury Mass



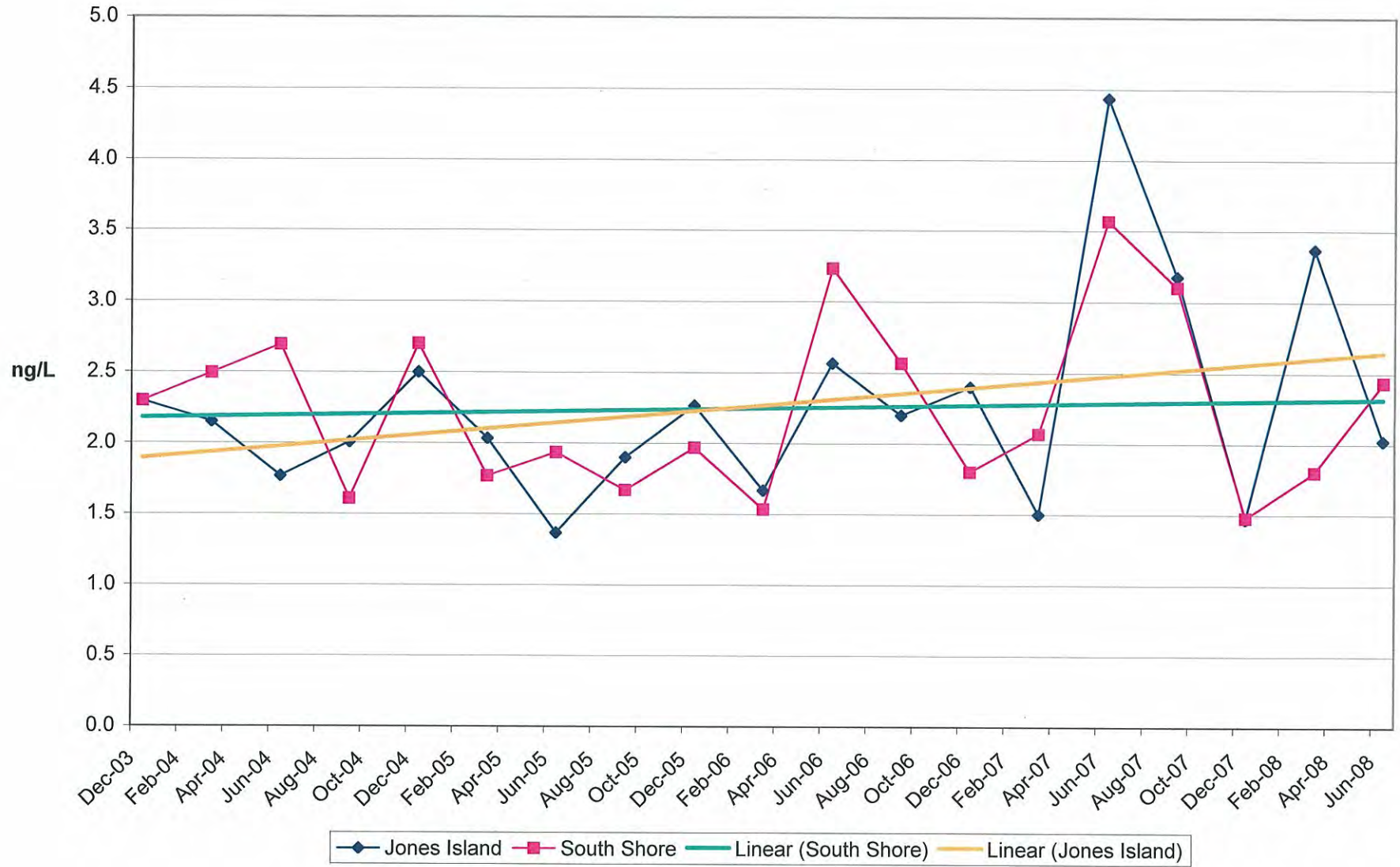
South Shore Influent Mercury Mass



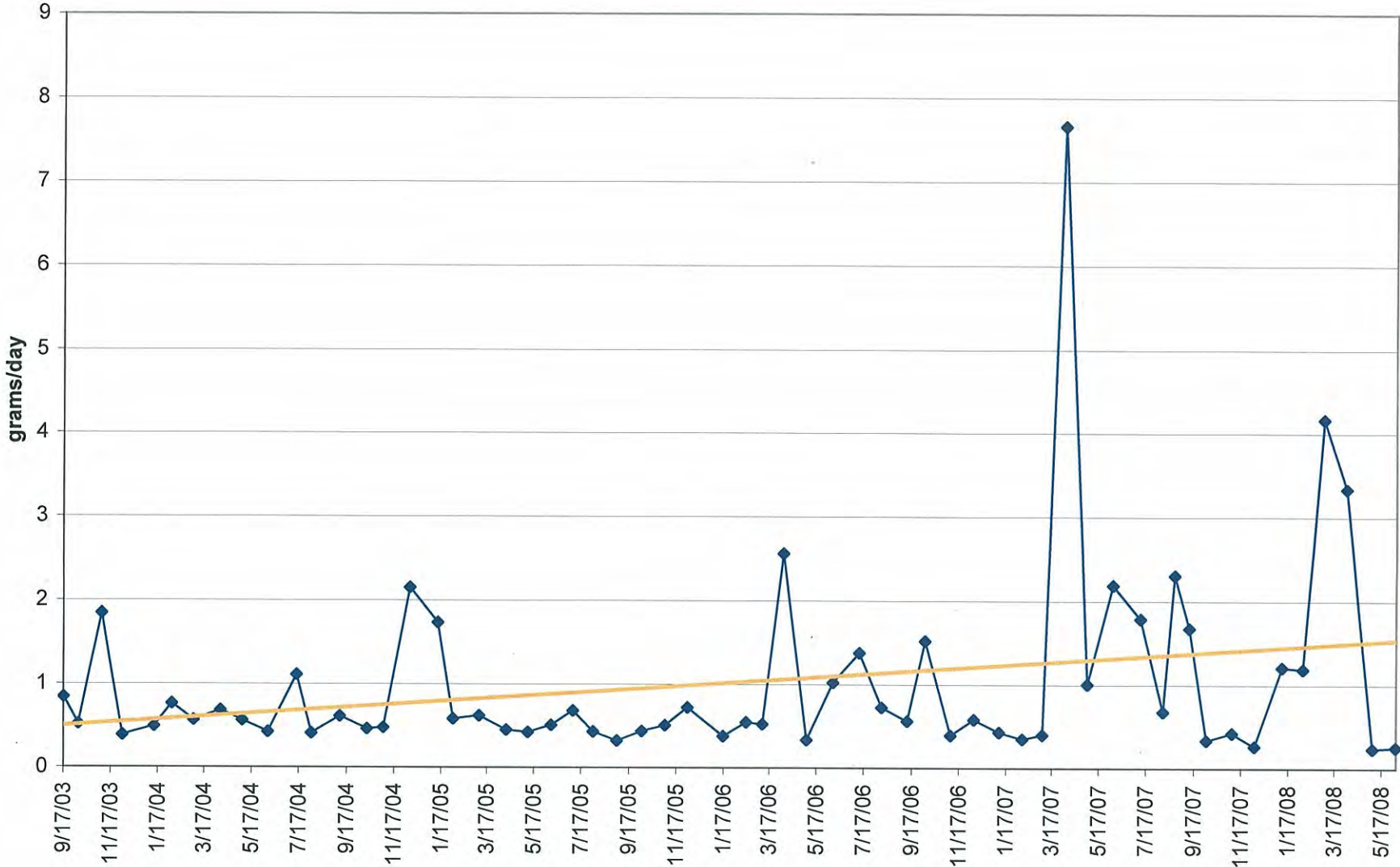
Effluent Mercury



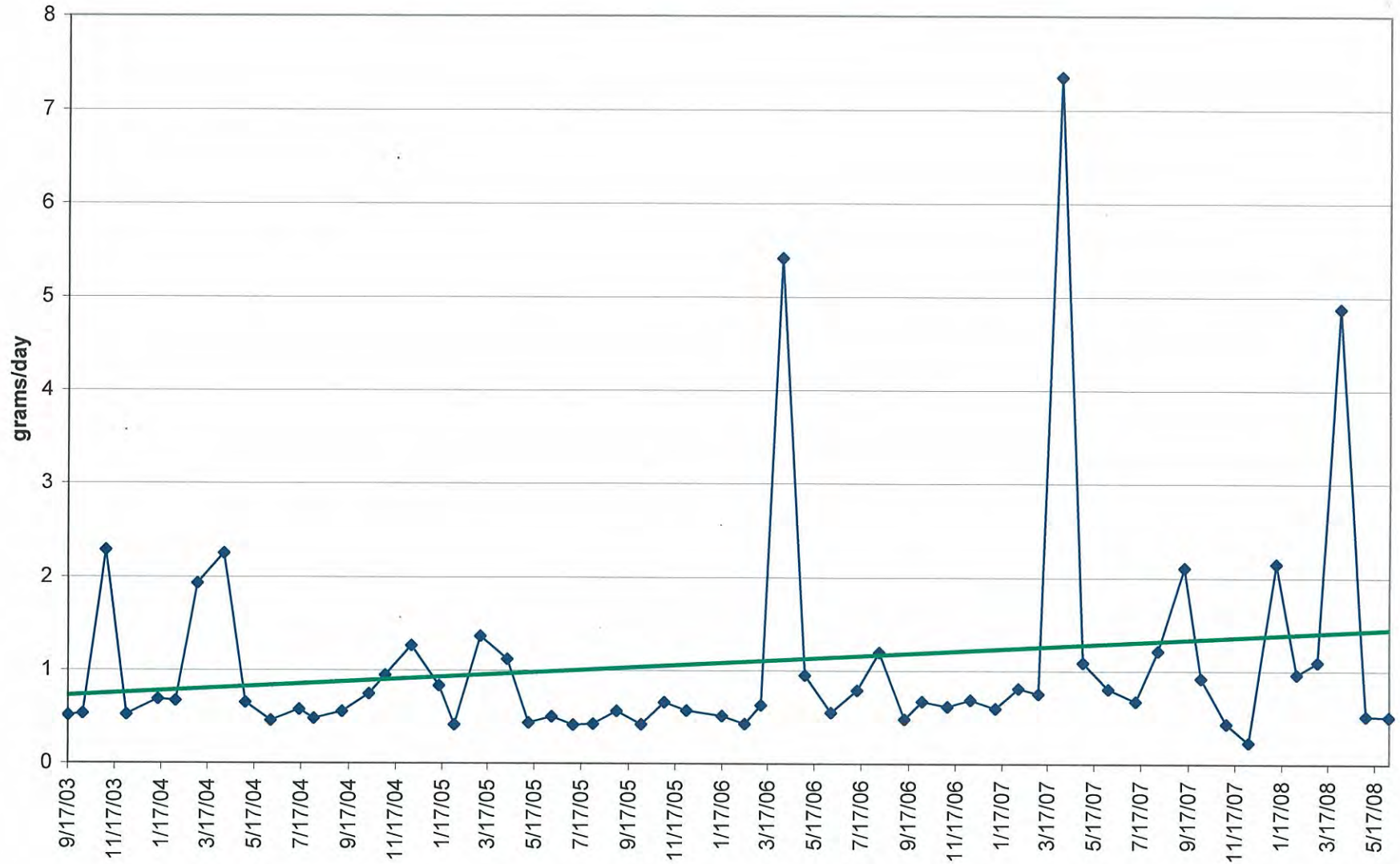
Effluent Quarterly Averages



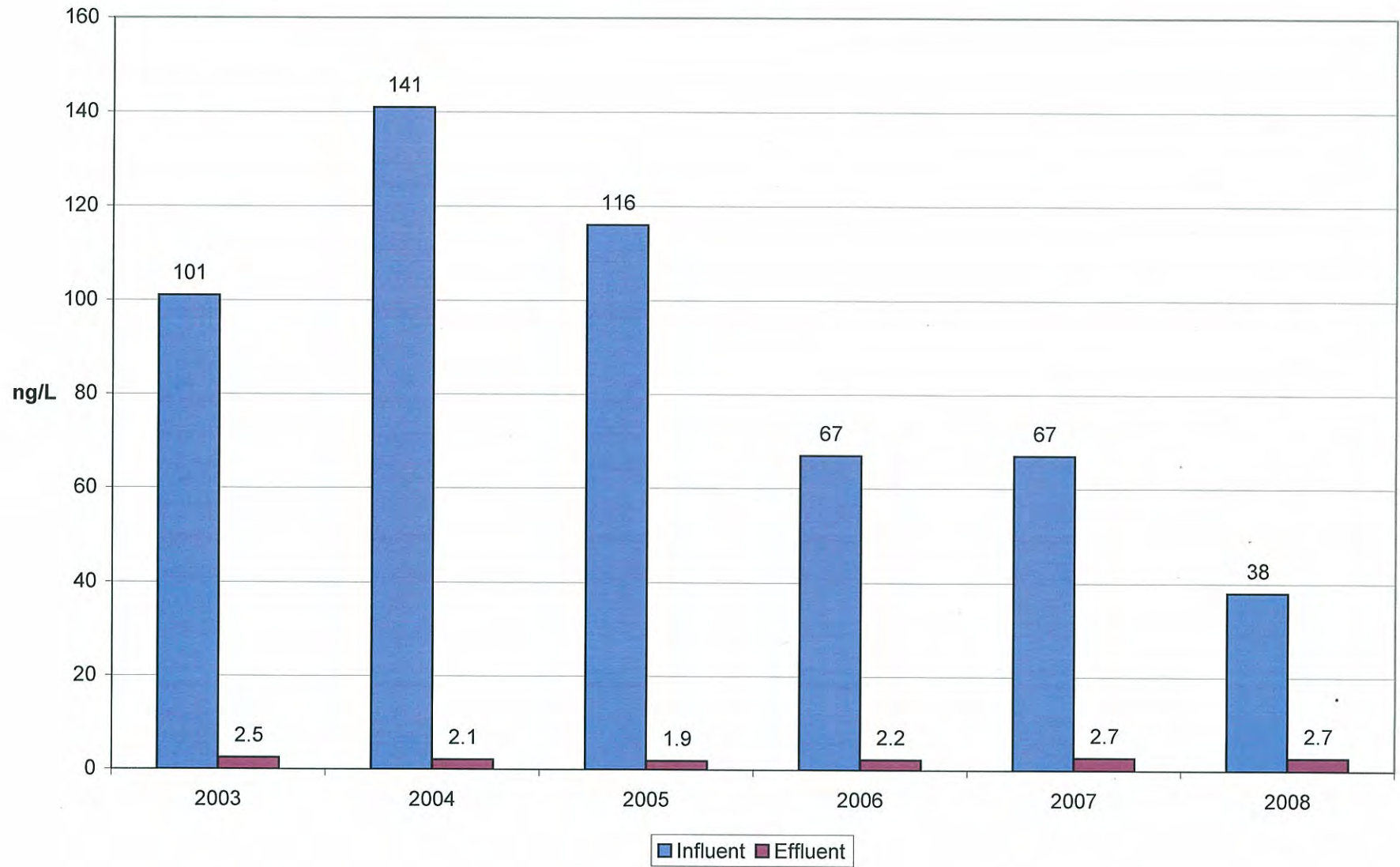
Jones Island Effluent Mercury Mass



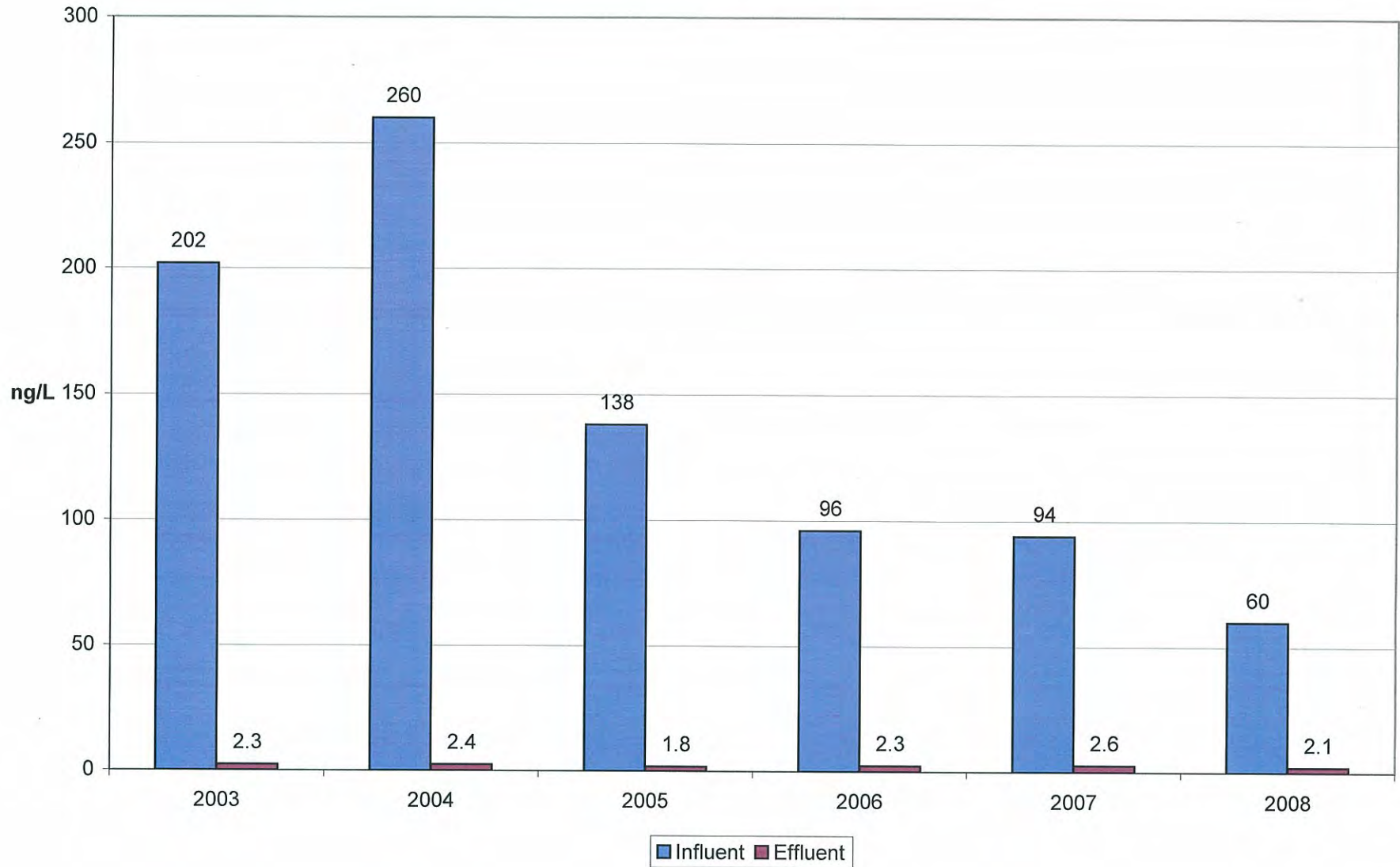
South Shore Effluent Mercury Mass



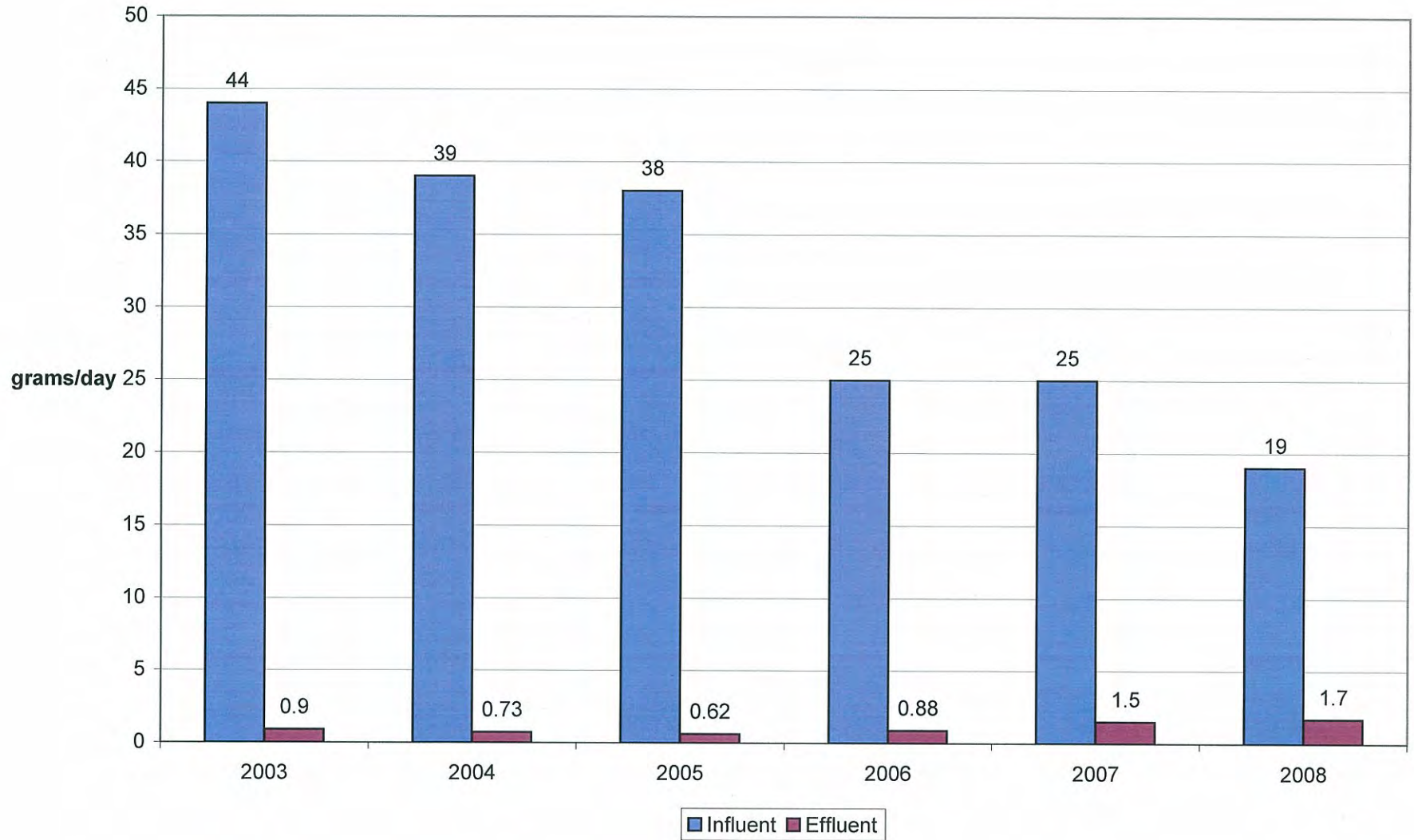
Jones Island Average Annual Mercury Concentrations



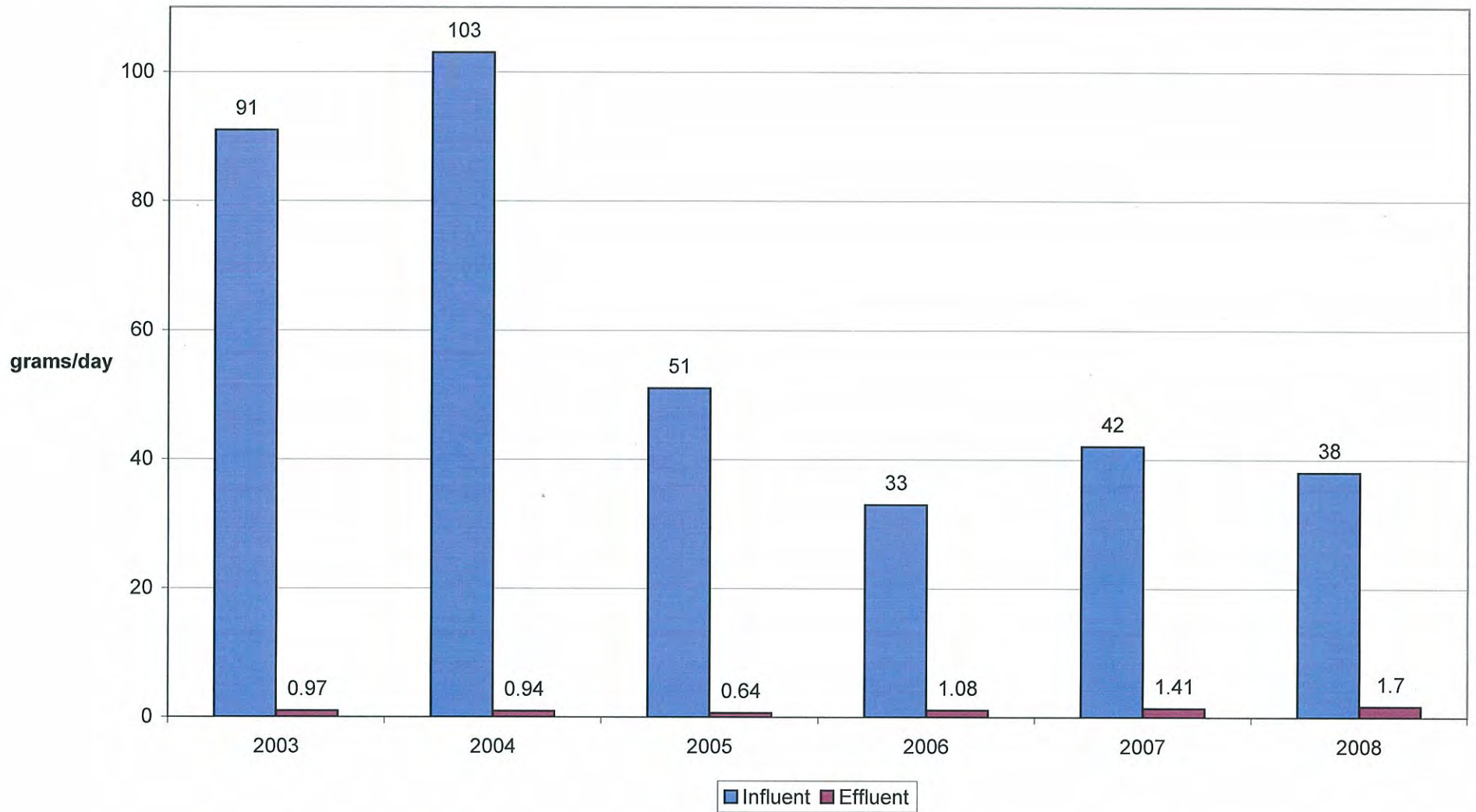
South Shore Average Annual Mercury Concentrations



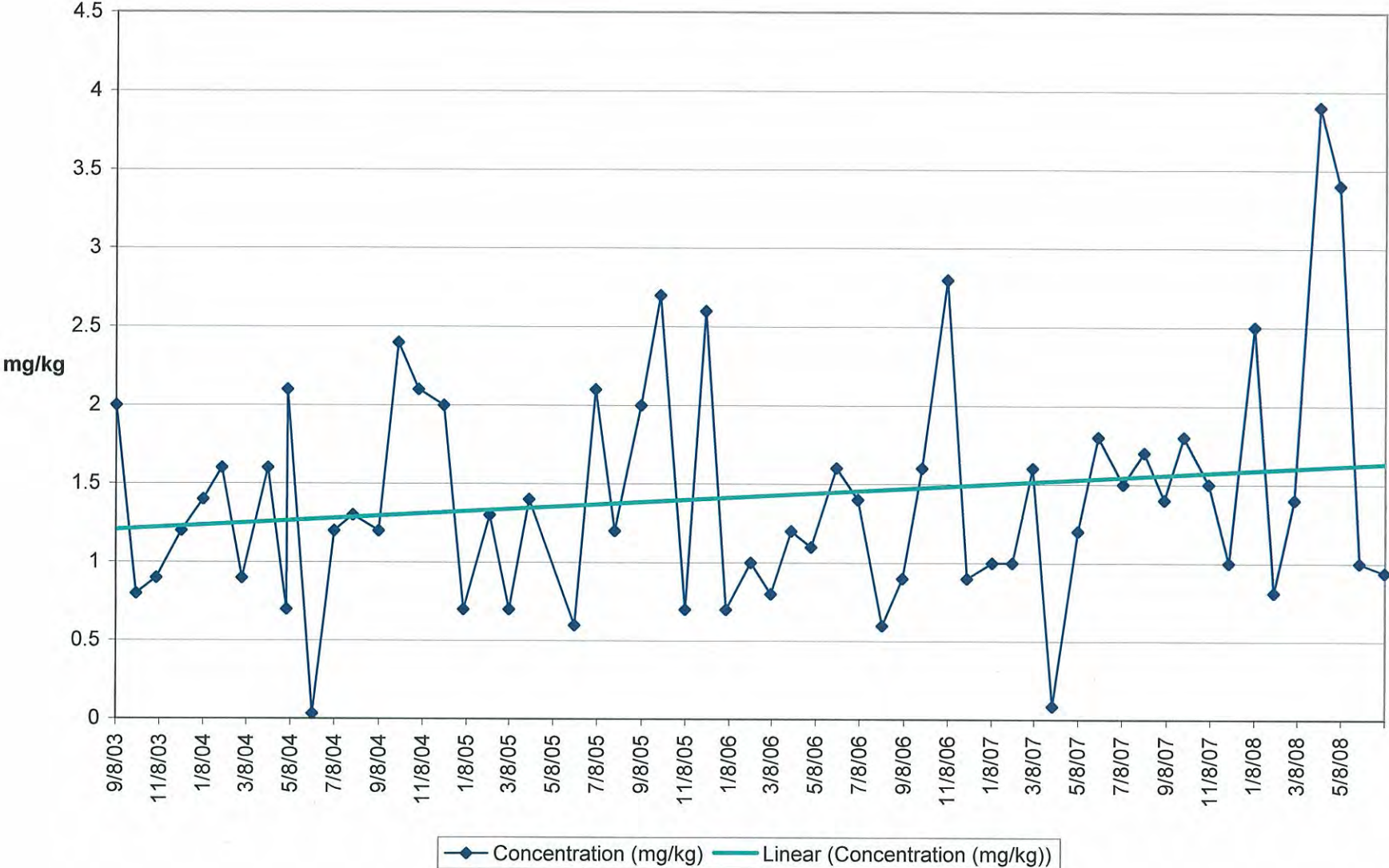
**Jones Island
Average Annual Daily Influent and Effluent Mercury Mass**



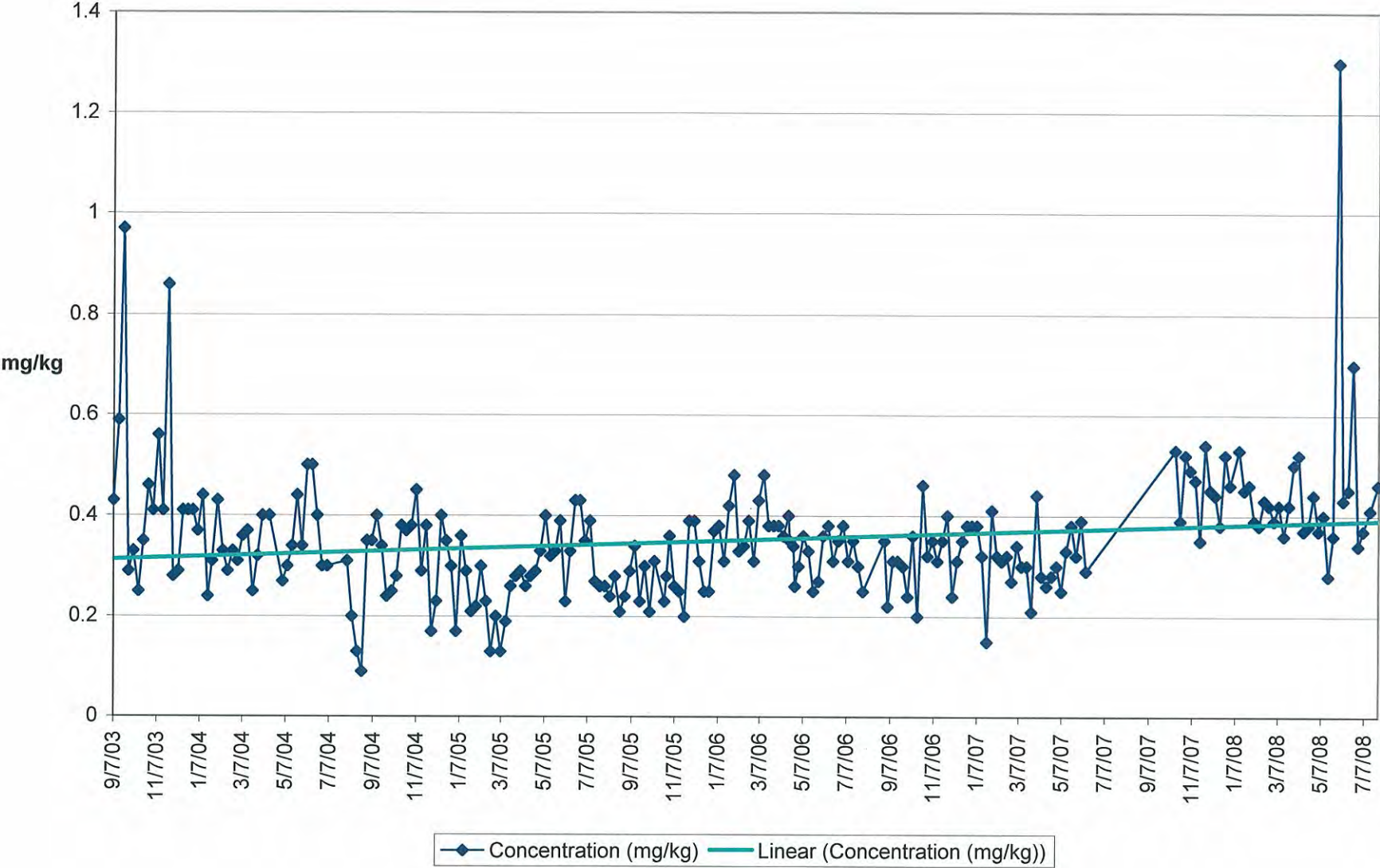
South Shore Average Annual Daily Influent and Effluent Mercury Mass



Agri-Life Mercury Concentrations



Milorganite Mercury Concentrations



Hospital Inventory

Name	Address	City	Zip	Contact	Telephone
Aurora Sinai Medical Center	945 North 12 th Street Post Office Box 342	Milwaukee	53201-0342	Jeff Kurtzweill	414-219-6500
Children's Hospital of Wisconsin	9000 West Wisconsin Avenue Post Office Box 1997	Milwaukee	53201-1997	Chris Stoll	414-266-2152
Columbia-Saint Mary's	2323 North Lake Drive	Milwaukee	53211	Jeff Bula	414-291-1722
Columbia-Saint Mary's	2025 East Newport Avenue	Milwaukee	53211	Troy Karll	414-961-5027
Columbia-Saint Mary's	13111 North Port Washington Road	Mequon	53097	Brian Weyker	262-243-7314
Community Memorial	W180 N8085 Town Hall Road Post Office Box 408	Menomonee Falls	53052-0408	Dale Scherbert	262-251-1000
Froedtert Memorial Lutheran	9200 West Wisconsin Avenue	Milwaukee	53226-3596	Keith Kubesch	414-805-2832
Orthopedic Hospital of Wisconsin	575 West River Woods Parkway	Glendale	53212	Tim Faller	414-961-6734
Saint Francis	3237 South 16 th Street	Milwaukee	53215	Ron Gonsiorowski	414-347-5105
Saint Joseph's Regional Medical Center	5000 West Chambers Street	Milwaukee	53210	John McGinnis	414-447-2051
Saint Luke's Medical Center	2900 West Oklahoma Avenue	Milwaukee	53215	James Jopek	414-649-7667
Saint Luke's South Shore	5900 South Lake Drive	Cudahy	53110	Jerry Luedtke	414-489-4007
U.S. Department of Veteran's Affairs	5000 West National Avenue	Milwaukee	53295	Jon Wardecke	414-384-2000 ext 42934
West Allis Memorial	8901 West Lincoln Avenue Post Office Box 27167A	West Allis	53227	Joseph Bena	414-328-7296
Wisconsin Heart	10000 West Blue Mound Road	Wauwatosa	53226	Robert Orcholski	414-778-7920

Hospital Outreach Summary

Outreach Accomplished

On October 1, 1999, the District held a *Reducing Mercury in Health Care* workshop, with support from Children's Hospital of Wisconsin, the University of Wisconsin Extension/Solid and Hazardous Waste Education Center, and the wastewater treatment facilities in Racine and Kenosha. The workshop had over 40 participants. Although most participants were from southeastern Wisconsin, this workshop had state-wide benefits because several participants were from as far away as Lancaster, Prairie Du Chien, and Chippewa Falls.

In 1998, 2000 and 2001, collection programs occurred. Hospitals utilized these programs. In 2000 and 2001, hospitals contributed 2,200 pounds of mercury and mercury-containing devices.

On October 5, 2005, the District mailed best management practice (BMP) questionnaires to the 15 hospitals listed on Form 4A. On March 13, 2006, the District re-mailed the BMP questionnaire to six facilities that did not respond to the October 5 mailing. Twelve hospitals returned questionnaires and four did not, according to the following table.

BMP Questionnaire Response

Hospitals Returning Questionnaires	Hospitals NOT Returning Questionnaires
Aurora Sinai Medical Center	Froedtert Memorial Lutheran
Children's Hospital of Wisconsin	Orthopedic Hospital of Wisconsin
Columbia-Saint Mary's (Lake Dr.)	Saint Luke's Medical Center
Columbia-Saint Mary's (Newport Ave.)	U.S. Department of Veterans Affairs
Columbia-Saint Mary's (Port Washington Rd.)	
Community Memorial	
Saint Francis	
Saint Joseph Regional Medical Center	
Saint Luke's South Shore	
Saint Michel's*	
West Allis Memorial	
Wisconsin Heart	

*Closed in 2006

The District visited 13 hospitals during 2005 and 2006 to discuss mercury issues and identify sampling locations, according to the following table. In some cases, one or more of the following conditions occurred and the District did not visit the hospital: the hospital refused to identify a contact person, the contact person had no interest in a visit, or the District was certain regarding sampling locations.

Hospital Visits

Hospital	Visit Date
Aurora Sinai Medical Center	October 26, 2005
Children's Hospital of Wisconsin	November 3, 2005
Columbia-St. Mary's (Lake Dr.)	November 28, 2005
Columbia-Saint Mary's (Newport Ave.)	December 13, 2005
Columbia-Saint Mary's (Port Washington Rd.)	November 23, 2005
Froedtert Memorial Lutheran	October 28, 2005
Orthopedic Hospital of Wisconsin	October 28, 2005
Saint Francis	October 26, 2005
Saint Joseph Regional Medical Center	December 13, 2005
Saint Luke's Medical Center	January 10, 2006
Saint Luke's South Shore	January 11, 2006
U.S. Department of Veteran's Affairs	November 9, 2005
West Allis Memorial	December 8, 2005

Outreach Planned

Mercury minimization at hospitals is a mature program. Hospitals have eliminated their mercury and mercury-containing devices, as shown by the participation in past collection programs. The BMP questionnaires show that the recommended BMPs are all implemented, with rare exceptions.

Generally, sampling has confirmed very low levels of mercury in discharges:

Summary of Hospital Sampling

Sample Results	Count	Percentage
Total	167	
No-detects	102	61%
Violations	4	2.4%

Sampling showed violations at two hospitals, Columbia-Saint Mary's (Lake Drive) and Saint Michael's. In each case, sampling after the violation showed compliance. At Columbia-Saint Mary's (Lake Drive), a violation occurred on October 7, 2005. Following the violation, seven samples complied. At Saint Michael's, Outfall 1, violations occurred on January 17, January 19, and April 17, 2006. Samples on May 30 and June 13 complied, along with other samples among the violations. In June 2006, emergency room and in-patient care ended at Saint Michael's. The building will remain in use as a clinic. In both cases, neither hospital could explain the cause of the violation.

These circumstances show that additional outreach to hospitals is not needed. Therefore, the District has no additional outreach planned. However, if the District's influent concentrations cease decreasing, then the District will inventory clinics, independent laboratories, and veterinary offices and evaluate BMP implementation.

Hospital Compliance Summary

Name	Wastewater-Related BMPs Already Implemented	Wastewater-Related BMPs Scheduled for Implementation	Sample Results
Aurora Sinai Medical Center	X		X
Children's Hospital of Wisconsin	X		X
Columbia-Saint Mary's (Lake Dr.)	X		X
Columbia-Saint Mary's (Newport Ave.)	X		X
Columbia-Saint Mary's (Port Washington Rd.)	X		X
Community Memorial	X		X
Froedtert Memorial Lutheran	No Response		X
Orthopedic Hospital of Wisconsin	No Response		X
Saint Francis	X		X
Saint Joseph's Regional Medical Center	X		X
Saint Luke's Medical Center	No Response		X
Saint Luke's South Shore	X		X
U.S. Department of Veteran's Affairs	No Response		X
West Allis Memorial	X		X
Wisconsin Heart	X		X

Evaluation

Type of Hospital	Number	Percentage
Total	15	
Implementing All Wastewater-Related BMPs	12	80%
All Wastewater-Related BMPs Scheduled for Implementation	0	0%
Sample Results	15	100%
Total Hospital Score		100%

Form 5A

Dental Office Inventory

The following table shows the dental offices in the District's service area that place or remove amalgam.

Amalgam Offices

Office Name	Address	City	Zip	Telephone	Separator Model
David Lubar, DDS	555 W Brown Deer Rd Suite 210	Bayside	53217	(414) 352-7700	Rebec
Greenbrook Dentistry	13780 W Greenfield Ave	Brookfield	53005	(262) 782-4860	Rebec Catch 1000
Donald Miller, DDS	17100 W Bluemound Rd Suite 207	Brookfield	53005	(262) 821-6960	R&D CE18
Brookfield Dentistry	13905 W Burleigh Rd	Brookfield	53005	(262) 786-8440	Solmetex Hg5
Timothy Jenness, DDS	4040 N Calhoun Rd	Brookfield	53005	(262) 781-8927	Rebec
Carl Erck, DDS	13620 W Capitol Dr	Brookfield	53005	(262) 781-5667	Rebec
Kim Tran-Wirtz, DDS	12720 W North Ave	Brookfield	53005	(262) 782-2300	Air Techniques
William Neuschaefer, DDS	125 N Executive Dr Suite 105	Brookfield	53005	(262) 784-7201	Solmetex Hg5
Keith Post, DDS	15655 W North Ave	Brookfield	53005	(262) 821-4499	Solmetex Hg5 Mini
Eastbrook Dental Associates	12660 W North Ave Suite D	Brookfield	53005	(262) 796-1312	R&D Services Amalgam Collector
Christopher Conlon, DDS	12690 W North Ave	Brookfield	53005	(262) 784-3740	R&D Services
Robert Saur, DDS	12690 W North Ave Suite C	Brookfield	53005	(262) 785-1499	Rebec Catch 400
Geary & Geary	12780 W North Ave Suite A	Brookfield	53005	(262) 860-1500	Rebec
David Brilowski, DDS	17050 W North Ave	Brookfield	53005	(262) 782-9240	Rebec Catch 400
Hajinian Dental Group	16905 W Wisconsin Ave	Brookfield	53005	(262) 789-9121	Pelton & Crane Windmill
Jay Preston, DDS	17000 W Capitol Dr	Brookfield	53005	(262) 781-1006	R&D Services Amalgam Collector
Charles Steinbach, DDS	17000 W Capitol Dr	Brookfield	53005	(262) 781-0080	Rebec Catch 400
Paul Culver, DDS	17160 W North Ave	Brookfield	53005	(262) 782-1655	Solmetex Hg5
Sears Family Dental Center	115 S Moorland Rd	Brookfield	53005	(262) 785-1402	Solmetex Hg5
Tobin Strupp, DDS	14335 W Capitol Dr Suite 4	Brookfield	53005	(262) 783-3311	Solmetex Hg5
Hermes Hoffman, DDS	5600 W Brown Deer Rd Suite 103	Brown Deer	53223	(414) 355-5580	Asdex AS-9
Mark Berger, DDS	7400 W Brown Deer Rd	Brown Deer	53223	(414) 354-1160	Solmetex Hg5
David Nelson, DDS	6900 W Brown Deer Rd Suite 102	Brown Deer	53223	(414) 355-5502	Rebec J401246
Kenneth Zganjar, DDS	6051 W Brown Deer Rd Suite 201	Brown Deer	53223	(414) 355-3202	Pure Water ECO 2
Kevin Valusek, DDS	6051 W Brown Deer Rd	Brown Deer	53223	(414) 357-7580	Pure Water ECO 2
Feinman & Himden	6051 W Brown Deer Rd Suite 203W	Brown Deer	53223	(414) 354-3000	Solmetex Hg5
Monica Bischoff, DDS	6051 W Brown Deer Rd Suite 203	Brown Deer	53223	(414) 354-3003	Solmetex Hg5
David Larson, DDS	5600 W Brown Deer Rd	Brown Deer	53223	(414) 354-1290	Asdex AS-9
Ronald Cohn, DDS	5600 W Brown Deer Rd Suite 102	Brown Deer	53223	(414) 355-9200	Asdex AS-9

Amalgam Offices

Office Name	Address	City	Zip	Telephone	Separator Model
David Koenig, DDS	4455 W Bradley Rd Suite 212	Brown Deer	53223	(414) 354-9600	Steri-Dent PV-2
Bruce Newman, DDS	4455 W Bradley Rd Suite 207	Brown Deer	53223	(414) 354-2300	Air Techniques
Knutsen Dental	5600 W Brown Deer Rd	Brown Deer	53223	(414) 355-5020	Rebec Catch 400
Levine Dental Assoc	5600 W Brown Deer Rd Suite G5	Brown Deer	53223	(414) 355-0215	Rebec Catch 1000
Louis Boryc, DDS	13195 W Hampton Ave	Butler	53007	(262) 781-9585	Pure Water ECO 2
Todd Walker, DDS	4716 S Packard Ave	Cudahy	53110	(414) 744-4465	Solmetex Hg5
Cudahy Dental Associates	6217 S Packard Ave	Cudahy	53110	(414) 764-5550	Apollo AVC150D
Susan Meinerz, DDS & David Paris, DDS	890 Elm Grove Rd Suite 106	Elm Grove	53122	(262) 784-7770	Solmetex Hg5
Joseph Pavletich, DDS	13435 Watertown Plank Rd Suite 1	Elm Grove	53122	(262) 786-4348	
Paul De Stefanis, DDS	1050 Legion Dr	Elm Grove	53122	(262) 782-5400	Solmetex Hg5
Brad Gerdes, DDS	6932 N Santa Monica Blvd	Fox Point	53217	(414) 332-6212	Air Techniques Amalgam Separator
Sandra Caspar, DDS	6878 N Santa Monica Blvd	Fox Point	53217	(414) 247-1990	Rebec Catch 400
Anne Neary, DDS	8989 N Port Washington Rd Suite 236	Fox Point	53217	(414) 351-5008	Solmetex Hg5
Ross & Chmiel	7400 W Rawson Ave Suite 233	Franklin	53132	(414) 525-0300	Pure Water ECO 2
Thomas Haddican, DDS	6522 S Lovers Lane Rd	Franklin	53132	(414) 425-1101	Rebec
Loomis Road Dental	9700 W Loomis Rd	Franklin	53132	(414) 529-3933	Rebec J10021
Forward Dental	9200 W Loomis Rd Suite 202	Franklin	53132	(414) 529-5330	Solmetex Hg5
Richard Poglitsch, DDS	9130 W Loomis Rd Suite 700	Franklin	53132	(414) 427-6453	Rebec
Pindel & Caiati	7255 S 76th St	Franklin	53132	(414) 425-0500	Rebec 400
Robert Schweitzer, DDS	7218 S 76th St	Franklin	53132	(414) 529-2136	
Franklin Dental	9725 W Saint Martins Rd	Franklin	53132	(414) 425-7050	
Roy Luecht, DDS	W156 N11377 Pilgrim Rd	Germantown	53022	(262) 251-0205	Rebec Catch 400
Stoeckl Family Dentistry	W175 N11120 Stonewood Dr	Germantown	53022	(262) 532-0022	Solmetex Hg5
Anthony Katsune, DDS	W176 N9810 Rivercrest Dr	Germantown	53022	(262) 251-6640	Solmetex Hg5
Dental Professionals	N112 W16760 Mequon Rd	Germantown	53022	(262) 255-7820	Rebec Catch 1000
County Line Dental	N97 W17095 Division Rd	Germantown	53022	(262) 251-1669	Air Techniques
Gerald B Salinsky, DDS	6076 N Port Washington Rd	Glendale	53217	(414) 962-8100	Rebec Catch 400
Port Road Dental Assoc	7725 N Port Washington Rd	Glendale	53217	(414) 351-6300	Rebec
C & E Elite Family Dentistry	7155 N Port Washington Rd	Glendale	53217	(414) 352-1600	Solmetex Hg5

Amalgam Offices

Office Name	Address	City	Zip	Telephone	Separator Model
Forward Dental	7040 N Port Washington Rd Suite 414	Glendale	53217	(414) 351-6010	Rebec
Quinn Dental	6373 N. Jean Nicolet Rd	Glendale	53217	(414) 228-9680	Air Techniques
Holmstrom & Ottoson Dental Office	5150 N Port Washington Rd Suite 201	Glendale	53217	(414) 964-8850	Rebec Catch 400
Darling Dental	350 W Green Tree Road	Glendale	53217	(414) 975-1761	Pure Water ECO 2
Michael Newton, DDS	5900 N Port Washington Rd Suite 106	Glendale	53217	(414) 332-5450	Pure Water ECO 2
Scott Lewis, DDS	5800 Bayshore Drive Suite B248	Glendale	53217	(414) 962-7110	Solmetex Hg5
Remington & Sandvick	6070 N Port Washington Rd	Glendale	53217	(414) 962-4100	Rebec Catch 400
Sears Dental Center	5200 S 76th St	Greendale	53129	(414) 423-1540	RamVac 590500
Greendale Dental Associates	5808 Broad St	Greendale	53129	(414) 421-2303	R&D Services Amalgam Collector
O'Malley Dentistry	8555 W Forest Home Ave Suite 101	Greenfield	53228	(414) 425-4005	Rebec Catch 400
Gary Major, DDS	3401 W Layton Ave	Greenfield	53221	(414) 282-7577	Rebec Catch 400
Donale Lenhardt, DDS	8405 W Forest Home Ave Suite 206	Greenfield	53228	(414) 425-0110	Rebec Catch 400
Andrew Patterson, DDS	8405 W Forest Home Ave Suite 201	Greenfield	53228	(414) 529-5432	Pure Water ECO 2
Forest Edge Dental	8401 W Forest Home Ave Suite 103	Greenfield	53228	(414) 529-3838	Rebec Catch 400
Jeffrey Dean, DDS	10700 W Howard Ave Suite 100	Greenfield	53228	(414) 321-6486	R&D Services Amalgam Collector
Eileen Langyel, DDS	3783 S 108th St	Greenfield	53228	(414) 546-3424	Air Techniques
Advanced Dental Treatment Center	10707 W Beloit Rd	Greenfield	53228	(414) 258-9630	Air Techniques A1048
David Weiss, DDS	5645 S 108th St	Hales Corners	53130	(414) 529-3253	Rebec J401320
Raimann & Mueller	11801 W Janesville Rd	Hales Corners	53130	(414) 425-1510	Solmetex Hg5 High Volume
Kwarciany & Whitlock Pediatric Dentistry	11035 W Forest Home Ave	Hales Corners	53130	(414) 529-1110	Rebec Catch 1000
Dental Care With Amore!	10360 W Forest Home Ave	Hales Corners	53130	(414) 425-0505	Rebec J1002027
Carey Grossert, DDS	10228 W Forest Home Ave	Hales Corners	53130	(414) 425-3934	Rebec
Maria Ramos, DDS	9415 W Forest Home Ave Suite 301	Hales Corners	53130	(414) 529-2060	Solmetex Hg5
Gilbert R Brickler, DDS	6080 S 108th St	Hales Corners	53130	(414) 529-2294	Solmetex Hg5 mini
Forward Dental	5151 S 108th St	Hales Corners	53130	(414) 427-0900	Rebec
Clemence Dental Group	5751 S 108th St	Hales Corners	53130	(414) 425-0120	Rebec Catch 400
Laska Family Dental	5717 S 108th St.	Hales Corners	53130	(414) 529-2280	Air Techniques
Czaplicki Family Dentistry	6191 S 108th St	Hales Corners	53130	(414) 427-9090	Rebec Caatch 1000
John Ansay, DDS	N88 W16951 Main St	Menomonee Falls	53051	(262) 255-1880	Air Techniques STS-3

Amalgam Offices

Office Name	Address	City	Zip	Telephone	Separator Model
James Molthen, DDS	N48 W14170 Hampton Ave	Menomonee Falls	53051	(262) 781-8416	Solmetex Hg5
Falls Dental Associates	N85 W16186 Appleton Ave	Menomonee Falls	53051	(262) 253-9797	Rebec Catch 9000
Falls Dental Group	N88 W17001 Main St	Menomonee Falls	53051	(262) 251-6070	Air Techniques
Ronald Schmidt, DDS	N89 W15680 Main St	Menomonee Falls	53051	(262) 251-2222	Solmetex Hg5
Ridge View Dental	W178 N9201 Watertower Rd Suite 100	Menomonee Falls	53051	(262) 251-5355	Rebec 9000
Stark & Dudley Dental Office	N84 W15959 Appleton Ave	Menomonee Falls	53051	(262) 251-6555	Solmetex Hg5
Stark & Dudley Dental Office	N84 W15959 Appleton Ave	Menomonee Falls	53051	(262) 251-6555	Solmetex Hg5
Stephen Thomas, DDS	N84 W15865 Appleton Ave	Menomonee Falls	53051	(262) 251-6980	Unidentified
Village Dental Group	N79 W14756 Appleton Ave	Menomonee Falls	53051	(262) 251-2010	Rebec Catch 1000
Richheimer Hano & Levandoski	N80 W14832 Appleton Ave	Menomonee Falls	53051	(262) 255-4343	Air Techniques Guardian A1200
Engel & Rennie	7604 W Mequon Rd	Mequon	53097	(262) 242-8929	Solmetex Hg5
Patel Martyn Hafner	10562 N Port Washington Rd	Mequon	53092	(262) 240-1220	Air Techniques
North Shore Dental Group	2601 W Mequon Rd	Mequon	53092	(262) 242-1180	Pure Water ECO 2
Comprehensive Dental Services	10521 N Port Washington Rd 200	Mequon	53092	(262) 241-2060	Rebec Catch 1000
Mequon Dental Group	10555 N Port Washington Suite 101	Mequon	53092	(262) 241-4460	Rebec Catch 1000
Oberbreckling & Johannes	10134 N Port Washington Rd	Mequon	53092	(262) 241-3500	Air Techniques
Sidney Friedman, DDS	10345 N Port Washington Rd	Mequon	53092	(262) 240-9400	Rebec Catch 400
David Brunner, DDS	10345 N Port Washington Rd	Mequon	53092	(262) 240-1200	Air Techniques STS-3
East Towne Dental Associates	11501 N Port Washington Rd	Mequon	53097	(262) 241-8880	Air Techniques A/T A1047
Dental Arts Assoc	9235 W Capitol Dr	Milwaukee	53222	(414) 462-3160	R&D Services Amalgam Collector
Lake Park Dentists	2532 E Bellevue Pl	Milwaukee	53211	(414) 963-9440	Solmetex Hg5 Mini
Dr. Nicholas Russo	6754 W Beloit Rd	Milwaukee	53219	(414) 327-1210	Pure Water ECO 2
Beloit Road Family Dentistry	9401 W Beloit Rd Suite 409	Milwaukee	53227	(414) 327-1454	R&D Services
Beloit Road Dental Care	9431 W Beloit Rd Suite 205	Milwaukee	53227	(414) 543-2657	Solmetex Hg5
G. Dental	7635 W Bluemound Rd Suite 208	Milwaukee	53213	(414) 258-6330	Pure Water ECO 2
Robert Jazgar, DDS	8112 W Bluemound Rd Suite 102	Milwaukee	53213	(414) 258-3043	Pure Water ECO 2
David Paris, DDS	601 N Broadway	Milwaukee	53202	(414) 272-7747	Solmetex Hg5
Smiles On Broadway	828 N Broadway Suite 505	Milwaukee	53202	(414) 272-8866	Solmetex Hg5
Burleigh Dental	7623 W Burleigh St	Milwaukee	53222	(414) 444-4334	R&D Services Amalgam Collector

Amalgam Offices

Office Name	Address	City	Zip	Telephone	Separator Model
Dental Associates Ltd	11711 W Burleigh St	Milwaukee	53222	(414) 771-5000	Rebec Catch 9000
Family Dental Center	2406 W Capitol Dr	Milwaukee	53206	(414) 445-7572	Solmetex Hg5
Westgate Dentistry-Children	8430 W Capitol Dr	Milwaukee	53222	(414) 463-8770	Solmetex Hg5
Children's Dental Center	8901 W Watertown Plank Rd	Milwaukee	53226	(414) 266-2040	Rebec Catch 1000
Ritter Knavel Clinic	9122 W Center St	Milwaukee	53222	(414) 771-8778	Solmetex Hg5
Dental Associates Ltd	1135 S Cesar E Chavez Dr	Milwaukee	53204	(414) 645-4540	Rebec Catch 9000
Angela Madre Dental Clinic	1308 S Cesar E Chavez Dr	Milwaukee	53204	(414) 699-5100	Rebec Catch 1000
Forward Dental	3030 S Chase Ave	Milwaukee	53207	(414) 481-7400	Rebec
Michael Kitzke, DDS	3647 S Chase Ave	Milwaukee	53207	(414) 769-0925	Pure Water ECO 2
Downer Avenue Dentist	2577 N Downer Ave Suite 202	Milwaukee	53211	(414) 962-5915	Pure Water ECO 2
Frank Galka, DDS	1845 N Farwell Ave Suite 105	Milwaukee	53202	(414) 276-4455	R&D Services CE18
William Kortsch	2400 N Farwell Ave	Milwaukee	53211	(414) 271-6740	Solmetex
Family Dental Ctr	4943 W Fond Du Lac Ave	Milwaukee	53216	(414) 873-3020	
Consumer Dental Clinic	5542 W Fond Du Lac Ave	Milwaukee	53216	(414) 464-1070	Rebec 400
American Dental Group	6719 W Capitol Dr	Milwaukee	53216	(414) 464-6300	Solmetex Hg5
William G Wong & Assoc	1947 S 60th St	Milwaukee	53219	(414) 545-6747	Solmetex Hg5
Johnston Community Dental Clinic	1230 W Grant St	Milwaukee	53212	(414) 286-8895	Rebec 400
Hampton Dental Assoc	5323 W Hampton Ave	Milwaukee	53218	(414) 464-9021	R&D Services Amalgam Collector
Breitweiser Dental Office	8427 W Burleigh St	Milwaukee	53222	(414) 873-9200	Air Techniques
Children's Hospital Dental Clinic	9000 W Wisconsin Ave	Milwaukee	53226	(414) 266-2040	Rebec Catch 1000
AIDS Resource Center	820 N Plankinton Ave	Milwaukee	53203	(414) 225-1561	Rebec Catch 400
Veterans Administration Medical Center	5000 W National Ave	Milwaukee	53295	(414) 384-2000	Rebec Catch 9000
Wisconsin Health Fund Dental Center	6200 W Bluemound Road	Milwaukee	53213	(414) 771-5600	Rebec Catch 9000
Issac Cogg's Community Health	2770 N 5th St	Milwaukee	53212	(414) 286-8885	Rebec 400
Kenneth Wisniewski, DDS	3339 S 16th St	Milwaukee	53215	(414) 645-2020	R&D Services Amalgam Collector
Hopkins Street Dental Group	3319 N 24th St	Milwaukee	53206	(414) 445-8806	Solmetex Hg5
Art Of Dentistry	9211 W Auer Ave	Milwaukee	53222	(414) 445-3670	R&D Services, Amalgam Collector
James Maroney, DDS	5954 S 27th St	Milwaukee	53221	(414) 282-4230	R&D Services Amalgam Collector
Northtown Dental Group	1929 W Atkinson Ave	Milwaukee	53206	(414) 442-4690	Solmetex Hg5

Amalgam Offices

Office Name	Address	City	Zip	Telephone	Separator Model
Daniel Malloy, DDS	230 N 76th St	Milwaukee	53213	(414) 258-2830	Rebec Catch 400
Jerry Gragg, DDS	3489 N 76th St	Milwaukee	53222	(414) 445-4111	Rebec Catch 400
Roland Wolferstetter, DDS	3953 N 76th St	Milwaukee	53222	(414) 464-8600	Rebec Catch 400
Marion Family Dental	4302 N 76th St	Milwaukee	53222	(414) 462-9420	Pure Water ECO 2
Northridge Dental Ctr	7906 N 76th St	Milwaukee	53223	(414) 354-9020	Solmetex Hg5
Bradley Dental Associates	7925 N 76th St	Milwaukee	53223	(414) 357-3232	Solmetex Hg5
J. William Franta, DDS	9001 N 76th St Suite 202	Milwaukee	53223	(414) 354-3990	R&D Services Amalgam Collector
Edgewood Dentistry	4811 S 76th St Suite 109	Milwaukee	53220	(414) 281-4811	Rebec Catch 400
L. Stephen Ward, DDS	3970 N 86th St	Milwaukee	53222	(414) 464-6820	Solmetex Hg5
Affiliated Dental Center	2723 W Forest Home Ave	Milwaukee	53215	(414) 645-7372	Solmetex Hg5
Gene Lasky, DDS	5324 S 27th St	Milwaukee	53221	(414) 281-7198	Solmetex Hg5
Vliet Street Dental	5919 W Vliet St	Milwaukee	53208	(414) 257-0101	Solmetex Hg5
John Keene, DDS	2015 E Newport Ave Suite 405	Milwaukee	53211	(414) 962-6000	
Neil Peterson, DDS	5019 W North Ave	Milwaukee	53208	(414) 445-6600	Rebec
Richard Lagerman, DDS	2929 N Oakland Ave	Milwaukee	53211	(414) 332-3195	Solmetex Hg5
Gregory Rodenbeck, DDS	1200 E Oklahoma Ave Suite A	Milwaukee	53207	(414) 481-8111	Asdex
John Zabkowicz, DDS	924 W Oklahoma Ave	Milwaukee	53215	(414) 744-6777	Rebec J401150
Southside Family Dental Clinic	1401 W Oklahoma Ave	Milwaukee	53215	(414) 671-4848	Solmetex Hg5
Novakovic & Miro	3535 W Oklahoma Ave	Milwaukee	53215	(414) 384-4220	Rebec Catch 400
Henry Wengelewski, DDS	4410 W Oklahoma Ave	Milwaukee	53219	(414) 545-0770	Solmetex Hg5
Ralph Robe, DDS	7635 W Oklahoma Ave Suite 115	Milwaukee	53219	(414) 546-2469	Pure Water ECO 2
William Baggot, DDS	10617 W Oklahoma Ave Suite L3	Milwaukee	53227	(414) 543-9911	Rebec Catch 400
Warren Biel, DDS	2266 N Prospect Ave Suite 504	Milwaukee	53202	(414) 272-1066	Pure Water ECO 2
Forward Dental	1575 N Rivercenter Dr	Milwaukee	53212	(414) 276-5453	Rebec REB3000
Capitol Family Dental	8422 W Capitol Dr	Milwaukee	53222		Air Techniques
Kowalski Dental Offices	4878 N Swan Rd Suite 1	Milwaukee	53225	(414) 461-3580	Rebec Catch 400
Scott Stanek, DDS	3527 W Oklahoma Ave	Milwaukee	53215	(414) 645-6699	Rebec Catch 400
Riverwalk Dentistry	735 N Water St Suite 826	Milwaukee	53202	(414) 271-1770	Rebec
John Scheels, DDS	6803 W Wells St	Milwaukee	53213	(414) 259-1155	Rebec Catch 400

Amalgam Offices

Office Name	Address	City	Zip	Telephone	Separator Model
Paul Smaglick, DDS	324 E Wisconsin Ave Suite 307	Milwaukee	53202	(414) 271-1246	Solmetex Hg5
Roepke & Weissgerber S.C.	324 E Wisconsin Ave Suite 950	Milwaukee	53202	(414) 276-4262	Rebec 1000
Joseph Erdmann, DDS	411 E Wisconsin Ave Suite 525	Milwaukee	53202	(414) 271-2050	Pure Water ECO 2
Timothy Bullion, DDS	161 W Wisconsin Ave Suite 5035	Milwaukee	53203	(414) 273-5553	Pure Water ECO 2
Downtown Dental Group	161 W Wisconsin Ave Suite 5036	Milwaukee	53203	(414) 278-6070	Rebec Catch 1000
Marquette University Dental School	1801 W Wisconsin Ave	Milwaukee	53233	(414) 288-3681	Rebec 9000
Mid-City Dental Group	2040 W Wisconsin Ave Suite 480	Milwaukee	53233	(414) 344-1828	Pure Water ECO 2
Mid-City Dental Group	6815 W Capital Dr Suite 200	Milwaukee	53216	(414) 344-1828	Pure Water ECO 2
Brown Dental Office	4639 W Forest Home Ave	Milwaukee	53219	(414) 546-2804	Rebec Catch 400
Joseph Schell, DDS	7430 W Forest Home Ave	Milwaukee	53220	(414) 543-2500	Solmetex Hg5
Forward Dental	9134 W Silver Spring Dr	Milwaukee	53225	(414) 535-0374	Rebec 3000
Lynn Lepak-McSorley, DDS	3615 W Oklahoma Ave	Milwaukee	53215	(414) 383-8787	Pure Water ECO 2
Meinhardt Dental Clinic	2377 N Humboldt Blvd	Milwaukee	53212	(414) 264-7750	Asdex AS9
Thomas Forecki, DDS	6203 S Howell Ave	Milwaukee	53207	(414) 264-5770	R&D Services Amalgam Collector
Hartman & Tolzman	5007 S Howell Ave Suite 315	Milwaukee	53207	(414) 483-1820	Rebec
Dental Solutions	5007 S Howell Ave	Milwaukee	53207	(414) 744-3322	Rebec Catch 400
Depledge Dental	3967 S Howell Ave	Milwaukee	53207	(414) 744-5800	Rebec Catch 400
Bay View Dental Care	3380 S Kinnickinnic Ave	Milwaukee	53207	(414) 482-2090	Rebec Catch 400
Children's Dental Clinic	3814 S Howell Ave	Milwaukee	53207	(414) 744-3333	Rebec
Howell Dental Group	3814 S Howell Ave	Milwaukee	53207	(414) 744-3333	Rebec
Gerald Jelacic, DDS	9120 W Hampton Ave Suite 115	Milwaukee	53225	(414) 462-6900	Pure Water ECO 2
Maxillofacial Surgery Clinic	840 N 87th St Suite 2169	Milwaukee	53226	(414) 805-5760	Rebec Catch 400
Joseph Janik, DDS	7101 N Green Bay Ave	Milwaukee	53209	(414) 352-5010	Pure Water ECO 2
Luther Manor Dental Office	4545 N 92nd St.	Milwaukee	53225	(414) 464-3880	Pure Water ECO 2
Gentle Care Dentistry	6919 W Forest Home Ave	Milwaukee	53220	(414) 545-8226	Solmetex Hg5
Forward Dental	5100 W Forest Home Ave	Milwaukee	53219	(414) 543-3301	
Third Ward Dental	219 N Milwaukee St.	Milwaukee	53202	(414) 273-9800	Solmetex Hg5
G.L. Reid, DDS	2724 W Lincoln Ave	Milwaukee	53215	(414) 645-0303	Rebec Catch 400
Dentists Southshore	3174 S Howell Ave	Milwaukee	53207	(414) 483-1600	Solmetex Hg5

Amalgam Offices

Office Name	Address	City	Zip	Telephone	Separator Model
Nancy Anne Sachs, DDS	9320 W Lisbon Ave	Milwaukee	53222	(414) 466-7600	Pure Water ECO 2
St Francis Dental Ctr	3555 S Kinnickinnic Ave	Milwaukee	53235	(414) 744-0634	R&D Services Amalgam Collector
Gary Czubkowski, DDS	8637 W Lisbon Ave	Milwaukee	53222	(414) 462-3140	Solmetex Hg5
Richard Schabowski, DDS	5400 W Lincoln Ave	Milwaukee	53219	(414) 327-6162	Rebec Catch 400
William Fink, DDS	505 W Mitchell St	Milwaukee	53204	(414) 383-3200	Solmetex Hg5 Mini
Lincoln Avenue Dental Group	2700 W Lincoln Ave	Milwaukee	53215	(414) 645-0217	Rebec
Parkway Dental Clinic	2906 S 20th St	Milwaukee	53215	(414) 288-3681	Rebec 400
Randolph Rosenberger, DDS	2745 W Layton Ave Suite 100	Milwaukee	53221	(414) 282-0503	Rebec 400
Layton Dental Group	131 W Layton Ave Suite 305	Milwaukee	53207	(414) 483-3840	Solmetex Hg5
Parkway Dental	2901 W Kinnickinnic River Suite 104	Milwaukee	53215	(414) 649-3510	Pure Water ECO 2
Stephen Brown, DDS	2901 W Kinnickinnic River Pkwy Suite 317	Milwaukee	53215	(414) 385-0308	Asdex AS-9
Family Dental Center	3500 W Lisbon Ave	Milwaukee	53208	(414) 342-0378	R&D Services Amalgam Collector
Patrick Connell, DDS	S79 W18900 Janesville Rd	Muskego	53150	(262) 679-2414	Air Techniques
Sandoval Dental Care	S63 W13660 Janesville Rd	Muskego	53150	(414) 425-9393	Solmetex Hg5
Chambers Dental Group	S76 W17619 Janesville Rd	Muskego	53150	(262) 679-2000	R&D Services CE18
Thomas Volm, DDS	15738 W National Ave	New Berlin	53151	(262) 784-2110	Solmetex Hg5
Charles Strehlow, DDS	15752 W National Ave	New Berlin	53151	(262) 785-0776	R&D Services
Gentle Family Dentistry	15430 W National Ave	New Berlin	53151	(262) 797-8303	Rebec 400
Neal Bucholtz, DDS	15350 W National Ave Suite 121	New Berlin	53151	(262) 784-7115	R&D Services
New Berlin Dental Group	4010 S Church Dr	New Berlin	53151	(262) 784-2449	Solmetex Hg5
Scott Williams, DDS	3911 S Moorland Rd	New Berlin	53151	(262) 784-1711	Solmetex Hg5
Family Dentistry	6312 S 27th St Suite 103	Oak Creek	53154	(414) 761-2450	R&D Services
Daniel Koester, DDS	132 E Drexel Ave	Oak Creek	53154	(414) 762-9010	Rebec
Michael Clausius, DDS	8725 S Howell Ave	Oak Creek	53154	(414) 762-0200	
Dana Bott, DDS	9555 S Howell Ave	Oak Creek	53154	(414) 764-4060	Air Techniques
Market Place Dental Group	8651 S Market Pl	Oak Creek	53154	(414) 764-2110	Solmetex Hg5
Fleish Family Dentistry	1714 E Capitol Dr	Shorewood	53211	(414) 963-0950	Air Techniques
Daniel Moos, DDS	4447 N Oakland Ave	Shorewood	53211	(414) 964-2223	Solmetex Hg5
Shorewood Family Dentistry	3970 N Oakland Ave Suite 702	Shorewood	53211	(414) 332-8150	Solmetex Hg5

Amalgam Offices

Office Name	Address	City	Zip	Telephone	Separator Model
Clarence Kusik, DDS	2321 E Capitol Dr	Shorewood	53211	(414) 332-7700	Solmetex Hg5
James Kircher, DDS	1400 E Capitol Dr	Shorewood	53211	(414) 961-2427	Pure Water ECO 2
Kamyar Saeian, DDS	3510 N Oakland Ave Suite 210	Shorewood	53211	(414) 967-0993	
Brzezinski & Mailhofer	3970 N Oakland Ave Suite 601	Shorewood	53211	(414) 961-1966	
Peter Shore, DDS	250 S Main St	Thiensville	53092	(262) 238-1500	Solmetex Hg5
General & Implant Dentistry	12217 W North Ave	Wauwatosa	53226	(414) 771-4580	Solmetex Hg5
Ann O'Neil, DDS	8500 W North Ave	Wauwatosa	53226	(414) 258-1730	Rebec Catch 400
William J Toonen & Assoc	8715 W North Ave	Wauwatosa	53226	(414) 258-5660	Air Techniques
Mark Crego, DDS	8726 W North Ave	Wauwatosa	53226	(414) 258-5351	Rebec
Milwaukee Tmj Treatment Ctr	2626 N Wauwatosa Ave Suite 105	Wauwatosa	53213	(414) 476-9400	Rebec J40152
David Lloyd, DDS	10425 W North Ave Suite 236	Wauwatosa	53226	(414) 453-1423	Not identified
Hajinian Dental Group	10425 W North Ave Suite 302	Wauwatosa	53226	(414) 259-9400	Solmetex Hg5
Thomas Falsetti, DDS	10625 W North Ave Suite 300	Wauwatosa	53226	(414) 456-1091	Air Techniques A1200
Becherer Dental	7015 W North Ave	Wauwatosa	53213	(414) 453-7665	R&D Services
Keith Paulkner, DDS	10625 W North Ave Suite 329	Wauwatosa	53226	(414) 259-1531	R&D Services Amalgam Collector
Daniel Bures, DDS	8736 W North Ave	Wauwatosa	53226	(414) 257-2800	Pure Water ECO 2
Steven Schnoll, DDS	2669 N Swan Blvd	Wauwatosa	53226	(414) 258-2216	Rebec
Geoff Mykleby, DDS	8700 W Watertown Plank Rd	Wauwatosa	53226	(414) 453-0445	Rebec
David Laste, DDS	11637 W North Ave	Wauwatosa	53226	(414) 259-0665	Rebec Catch 400
Paul Schulze, DDS	10625 W North Ave Suite 320	Wauwatosa	53226	(414) 774-5020	Rebec
Marinelli & Ferentchak	1011 N Mayfair Rd Suite 303	Wauwatosa	53226	(414) 771-4480	Rebec Catch 400
Marinelli & Tongas	2380 N 124th St Suite 202	Wauwatosa	53226	(414) 774-5646	Solmetex Hg5
Thomas Frost, DDS	10425 W North Ave Suite 249	Wauwatosa	53226	(414) 454-0700	Pure Water ECO 2
Tim Kirkpatrick, DDS	11040 W Bluemound Rd Suite 201	Wauwatosa	53226	(414) 476-4777	Rebec
Barry Baumann, DDS	6535 W North Ave	Wauwatosa	53213	(414) 258-8190	Air Techniques A1120
Gentle Dentistry	2300 N Mayfair Rd Suite 235	Wauwatosa	53226	(414) 257-3103	Rebec Catch 400
Dental Office	2300 N Mayfair Rd Suite 345	Wauwatosa	53226	(414) 456-9020	Solmetex Hg5
American Dental Professionals	2300 N Mayfair Rd Suite 920	Wauwatosa	53226	(414) 257-1230	Pure Water ECO 2
Del Balso Dental	2300 N Mayfair Rd Suite 1040	Wauwatosa	53226	(414) 774-4222	Rebec Catch 400

Amalgam Offices

Office Name	Address	City	Zip	Telephone	Separator Model
James Pechloff, DDS	2645 N Mayfair Rd Suite 240	Wauwatosa	53226	(414) 475-5505	Rebec Catch 400
McGinn & La Court Family Dentistry	2505 N Mayfair Rd Suite 103	Wauwatosa	53226	(414) 258-2117	Rebec
Perry Sukowatey, DDS	2600 N Mayfair Rd Suite 450	Wauwatosa	53226	(414) 258-8444	Solmetex Hg5
Therese Pickart, DDS	2600 N Mayfair Rd Suite 625	Wauwatosa	53226	(414) 258-1008	Rebec
Copoulos Dental	2600 N Mayfair Rd Suite 690	Wauwatosa	53226	(414) 771-1228	Rebec Catch 400
Wauwatosa Dental Group	2600 N Mayfair Rd Suite 750	Wauwatosa	53226	(414) 257-3366	Rebec Catch 9000
Dennis Dwyer, DDS	2600 N Mayfair Rd Suite 945	Wauwatosa	53226	(414) 258-5501	Solmetex Hg5
Morgenroth Dental	2500 N Mayfair Rd Suite 345	Wauwatosa	53226	(414) 257-2010	Pure Water ECO 2
Conner & Wolf Dental Office	10863 W Bluemound Rd	Wauwatosa	53226	(414) 258-0120	Rebec Catch 400
Dennis Anderson, DDS	10701 W Lincoln Ave	West Allis	53227	(414) 545-9090	Rebec
Suburban Dental Clinic	10827 W Lincoln Ave	West Allis	53227	(414) 543-2444	Solmetex Hg5
Richard Verbos, DDS	10915 W Lincoln Ave	West Allis	53227	(414) 545-3350	Pure Water ECO 2
Lianne Culver, DDS	10923 W Lincoln Ave	West Allis	53227	(414) 327-4600	Rebec
Forward Dental	8801 W National Ave	West Allis	53227	(414) 327-6363	Rebec
Jeffrey Welnak, DDS	10533 W National Ave	West Allis	53227	(414) 545-2050	Rebec Catch 400
Peter Limberatos, DDS	10820 W National Ave	West Allis	53227	(414) 321-7700	
Jeffrey Putney, DDS	12320 W Oklahoma Ave	West Allis	53227	(414) 321-6890	Rebec Catch 400
James Fakler, DDS	6033 W National Ave	West Allis	53214	(414) 475-0588	Rebec
Robert Meddaugh, DDS	2075 S 81st St	West Allis	53219	(414) 327-6160	Rebec Catch 400
Michael Schwab, DDS	10401 W Lincoln Ave Suite 205	West Allis	53227	(414) 545-5030	Solmetex Hg5
Peter Wilsens & Thomas Casey, DDS	10202 W Hayes Ave	West Allis	53227	(414) 321-2720	Rebec Caatch 400
West Allis Dental Care	7130 W Greenfield Ave	West Allis	53214	(414) 258-2500	Rebec Catch 400
P S Sidhu & Assoc	1417 S 108th St	West Allis	53214	(414) 771-5588	Rebec Catch 400
Brian Teclaw, DDS	2301 S 108th St	West Allis	53227	(414) 321-2320	Solmetex Hg5
Frederick Walker, DDS	2319 S 108th St	West Allis	53227	(414) 541-0055	Air Techniques
Chan Tran, DDS	2387 S 102nd St	West Allis	53227	(414) 329-1171	Solmetex Hg5
Paul Mroczkowski, DDS	3044 S 92nd St	West Allis	53227	(414) 321-7744	Pure Water ECO 2
Quad/Graphics Dental Clinic	555 S 108th St	West Allis	53214	(414) 566-3000	Solmetex Hg5
Michael Flynn, DDS	2323 S 109th St Suite 300	West Allis	53227	(414) 541-8250	R&D CE18

Amalgam Offices

Office Name	Address	City	Zip	Telephone	Separator Model
American Dental Specialty Institute	2323 S 109th St Suite 275	West Allis	53227	(414) 321-7200	Solmetex Hg5
Sdano Dental Clinic	8701 W Greenfield Ave	West Allis	53214	(414) 476-4469	Air Techniques
Mahn & Mahn	10202 W Hayes Ave Suite 203	West Allis	53227	(414) 541-5000	Rebec Catch 400
RLJ Dental	10708 W Hayes Ave	West Allis	53227	(414) 545-3200	Rebec Catch 400
Happel & Coakley	8900 W Lincoln Ave	West Allis	53227	(414) 541-8900	Rebec Catch 400
Gloyeck & Gloyeck	10401 W Lincoln Ave Suite 102	West Allis	53227	(414) 545-4440	Rebec Catch 400
Barry Franzen, DDS	10401 W Lincoln Ave Suite 105	West Allis	53227	(414) 543-5432	Solmetex Hg5
James Maurin, DDS	10401 W Lincoln Ave Suite 204	West Allis	53227	(414) 545-5380	Pure Water ECO 2
James Funke, DDS	4701 W National Ave	West Milwaukee	53214	(414) 645-7777	R&D Services CE18
George Vukmir, DDS	409 E Silver Spring Dr	Whitefish Bay	53217	(414) 332-5530	Rebec Catch 400
Paul Palen, DDS	155 E Silver Spring Dr	Whitefish Bay	53217	(414) 332-1484	
Robert Johannes, DDS	316 E Silver Spring Dr Suite 236	Whitefish Bay	53217	(414) 332-4880	Solmetex Hg5

Dental Office Outreach and Compliance Summary

Outreach Accomplished

Date	Action
2003	Worked with the Wisconsin Dental Association, the Greater Milwaukee Dental Association, and individual dentists regarding draft rules
January 2004	Adopted rules requiring best management practices (BMPs) immediately and separators before February 1, 2008
May 2004	Staffed display at Wisconsin Dental Association convention with the Department of Natural Resources and University of Wisconsin Extension/Solid and Hazardous Waste Education Center
2004	Collected case study information from offices with amalgam separators and prepared amalgam management booklet with University of Wisconsin Extension/Solid and Hazardous Waste Education Center
November 2004	Mailed <i>Amalgam Management for Dental Offices</i> to all dentists in the Milwaukee area and mailed 437 BMP certification forms.
February 1, 2005	Received BMP certifications from 285 offices (65%)
May 2005	Staffed display at Wisconsin Dental Association convention with the Department of Natural Resources and University of Wisconsin Extension/Solid and Hazardous Waste Education Center
Summer 2005	Called all offices that had not returned a BMP certification form and visited 35 dental offices
February 1, 2006	Received amalgam separator installation reports
Summer 2006	Called all offices that had not returned a BMP certification form or an amalgam separator installation report, received numerous forms in response to these calls, and visited 30 offices
February 1, 2007	Received amalgam separator installation reports
Summer 2007	Called all offices that had not returned the amalgam separator installation report due February 1, 2007, and received numerous forms in response to these calls
October to December 2007	Inspected 5 offices
December 2007	Mailed 46 reporting forms for the report due February 1, 2008
February 2007	Evaluated returned reports, identified offices whose responses were absent, incomplete, or inadequate
February 2007	Mailed reporting forms to offices with missing reports
April 2008	Held workshop for 60 municipal and state staff from the United States and Canada to compare and contrast programs
May 2008	Staffed display at Wisconsin Dental Association Convention

Outreach Planned

Date	Action
Continuing	Visit several offices each year to evaluate compliance
Continuing	General education, individual enforcement action, or rule changes, depending upon the findings of the inspections

Evaluation

Type of Office	Number	Percentage
Amalgam offices	302	
Amalgam offices already implementing both BMPs and separators	291	96%
Amalgam offices implementing BMPs with a separator scheduled for installation	0	0%
Sample results comply	0	0%
Total dental score	291	96%

Form 6A
Schools Inventory

Table 6-1 shows public high schools. Table 6-2 shows private high schools.

In response to the large number of schools in the District, the current schools inventory contains only high schools.

Table 6-1

Public High Schools

Name	Street	City	Zip	Science Department Chair	Phone
Central High School	16900 Gebhardt Rd	Brookfield	53005-5138	Jeff Gryzwa	(262) 785 - 3910
East High School	3305 Lilly Rd	Brookfield	53005-7608	Judith Patrick	(262) 773 - 2000
Brown Deer High School	8060 N 60th St	Brown Deer	53223-3599	Gina Vogt	(414) 371 - 6750
Cudahy High School	4950 S Lake Dr	Cudahy	53110-1700	Christopher Stewart	(414) 294 - 2700
Franklin High School	8222 S 51st St	Franklin	53132-9293	Linda Stenmark	(414) 423 - 4640
Nicolet High School	6701 N Jean Nicolet Rd	Glendale	53217-3799	Karyl Rosenberg	(414) 351 - 1700
Greendale High School	6801 Southway	Greendale	53129-2498	Wade Bosworth	(414) 423 - 0110
Greenfield High School	4800 S 60th St	Greenfield	53220-4699	Melinda Carothers	(414) 281 - 6200
Whitnall High School	5000 S 116th St	Greenfield	53228-3197	Mark Nowakowski	(414) 525 - 8500
Menomonee Falls High School	W142 N8101 Merrimac Dr	Menomonee Falls	53051-3999	Craig Amundson	(262) 255 - 8444
Homestead High School	5000 West Mequon Road	Mequon	53092	Dave Savage	(262) 238 - 5695
Bradley Technical and Trade High School	700 South Fourth Street	Milwaukee	53204-1596	Diane Mudgett	(414) 212 - 2400
South Division High School	1515 W Lapham Blvd	Milwaukee	53204-3296	Buen Dia	(414) 902 - 8300
Metropolitan High School	1758 N 9th St	Milwaukee	53205-1706	Karen Greens	(414) 267 - 5400
North Division High School	1011 W Center St	Milwaukee	53206-3299	No Science Teachers	(414) 267 - 4900
Bay View High School	2751 S Lenox St	Milwaukee	53207-2299	James Cox	(414) 294 - 2400
Custer High School	5075 N Sherman Blvd	Milwaukee	53209-5299	Jacqueline Aleem	(414) 393 - 4900
King High School	1801 W Olive St	Milwaukee	53209-6898	Doug Glasenapp	(414) 267 - 0700
Washington High School	2525 N Sherman Blvd	Milwaukee	53210-2999	Patricia Winding	(414) 875 - 5900
Riverside High School	1615 E Locust St	Milwaukee	53211-3298	Jeff Anderson	(414) 906 - 4900
Juneau High School	6415 W Mt Vernon Ave	Milwaukee	53213	David Caruso	(414) 256 - 8200
Pulaski High School	2500 W Oklahoma Ave	Milwaukee	53215-4498	Daniel Soiney	(414) 902 - 8900
Marshall High School	4141 N 64th St	Milwaukee	53216-1198	(Unable to reach)	(414) 393 - 2300
Madison High School	8135 W Florist Ave	Milwaukee	53218-1794	Kathleen Damrow	(414) 393 - 6100
Hamilton High School	6215 W Warnimont Ave	Milwaukee	53220-1399	Don Ho	(414) 327 - 9300
Vincent High School	7501 N Granville Rd	Milwaukee	53224-3998	John Howard	(262) 236 - 1200
Milwaukee High School of the Arts	2300 W Highland Ave	Milwaukee	53233-1099	Blain Wisniewski	(414) 934 - 7000
Muskego High School	W183 S8750 Racine Ave	Muskego	53150-7602	Pam Hosseini	(262) 679 - 2300
New Berlin High School	18695 W Cleveland Ave	New Berlin	53146-2231	Jeff Shorer	(262) 789 - 6400
Eisenhower High School	4333 S Sunnyslope Rd	New Berlin	53151-6899	Pat Mead	(262) 789 - 6300
Oak Creek High School	340 E Puetz Rd	Oak Creek	53154-3200	Linda Weber	(414) 768 - 6210
Saint Francis High School	4225 S Lake Dr	Saint Francis	53235-5941	Eric Gottfried	(414) 747 - 3600
Shorewood High School	1701 E Capitol Dr	Shorewood	53211-1996	Jim Beckers	(414) 963 - 6920
East High School	7500 Milwaukee Ave	Wauwatosa	53213-2206	Judith Patrick	(414) 773 - 2000
West High School	11400 W Center St	Wauwatosa	53222-4213	Mike Vann	(414) 773 - 3000
Hale High School	11601 W Lincoln Ave	West Allis	53227-1096	Doug Jordan	(414) 604 - 3200
Central High School	8516 W Lincoln Ave	West Allis	53227-2599	Dale Lindenberg	(414) 604 - 3100
Whitefish Bay High School	1200 E Fairmount Ave	Whitefish Bay	53217-6099	Marissa Roberts	(414) 963 - 3928

Table 6-2

Private High Schools

Name	Street	City	Zip	Science Department Chair	Phone
Divine Savior Holy Angels High School	4257 North 100th Street	Milwaukee	53222	Betty Jo Azpell	(414) 462 - 3742
Dominican High School	120 East Silver Spring Drive	Whitefish Bay	53217	Bernard Schreiner	(414) 332 - 1170
Marquette University High School	3401 West Wisconsin Avenue	Milwaukee	53222	Jim Kostenko	(414) 933 - 7220
Messmer High School	742 West Capitol Drive	Milwaukee	53212	Carol Johnson	(414) 264 - 5440
Martin Luther High School	5201 South 76th Street	Greendale	53129	Paul Kindschi	(414) 421 - 4000
Milwaukee Lutheran High School	9700 West Grantosa Drive	Wauwatosa	53222	Steve Kohrs	(414) 461 - 6000
Pius XI High School	135 North 76th Street	Milwaukee	53213	Betty Hunt	(414) 290 - 7000
Saint Joan Antida High School	1341 North Cass Street	Milwaukee	53202	Ann Staab	(414) 272 - 8423
Thomas More High School	2601 East Morgan Avenue	Milwaukee	53207	Lumiana Boyer	(414) 481 - 8370
University School of Milwaukee	2100 West Fairy Chasm Road	River Hills	53217	Paul Greeney	(414) 352 - 6000
Wisconsin Lutheran High School	330 North Glenview Avenue	Milwaukee	53213		(414) 453 - 4567

Schools Outreach and Compliance Summary

Outreach Accomplished

Date	Action
1998-1999	Promoted the curriculum package <i>Mercury in Your Community and the Environment</i> by contacting teachers by mail and holding workshops
2000-2001	Collected 3,199 thermometers, 22 barometers, 11 sphygmomanometers, and 235 pounds of other materials from 56 schools for \$17,315 in rewards, using funding provided by the Department of Natural Resources.
April 7, 2006	Mailed BMP questionnaire to the high schools listed in Tables 6-1 and 6-2. Six schools returned the questionnaire. One school reported implementation of all wastewater best management practices.

Outreach Planned

Date	Action
If Influent concentrations cease decreasing	Contact high schools by mail or in-person to evaluate implementation of best management practices
After previous step	Commence sampling of high schools who are unresponsive regarding best management practice implementation
After previous step	Extend inventory to middle schools, colleges, and universities and evaluate their implementation of best management practices
As grant funding is available	Collect mercury

Evaluation

High Schools	Number	Percentage
Total	49	
Implementing All Wastewater-Related BMPs	1	2%
All Wastewater-Related BMPs Scheduled for Implementation	0	0%
Sample Results	0	0%
Score		2%

Form 7A

Significant Industrial User Inventory

A list of significant industrial users follows.



Preserving The Environment •
Improving Water Quality

Form 6/7-1

Current Significant Industrial Users

As of 13-Aug-08

Permit	Company Name	Street	City, State	Zip Code	SIC Code
1231.05	A. Werner Silversmiths	1241 N. Water St.	Milwaukee, WI	53202	3471
1181.05	ABQC Corp.	1602 South 1st Street	Milwaukee, WI	53204	3471
1047.03	ALSCO American Industrial	4250 North 124th Street	Wauwatosa, WI	53222	7218
1257.05	Acme Galvanizing	2730 S. 19th St.	Milwaukee, WI	53215	3479
360.04	Adams Industries	1945 North 30th Street	Milwaukee, WI	53208	7699
5493.05	ArcRon Division of IEA	W141 N9510 Fountain Blvd	Menomonee Falls, WI	53051	3443
1252.05	Artistic Plating	405 West Cherry Street	Milwaukee, WI	53212	3471
816.03	Badger Alloys Inc.	5120 West State Street	Milwaukee, WI	53208	3325
2199.06	Badger Meter	4545 W. Brown Deer Rd.	Brown Deer, WI	53223	3824
4585.07	Ball	8500 West Tower Ave.	Milwaukee, WI	53224	3411
4586.01	Baptista's Bakery	4625 West Oakwood Park Dr	Franklin, WI	53132	2051
998.03	Bodycote Thermal Processi	16167 West Rogers Drive	New Berlin, WI	53151	3398
5929.01	Brass Light Gallery	1101 West St. Paul	Milwaukee, WI	53233	3645
1377.05	Briggs & Stratton	3300 North 124th Street	Wauwatosa, WI	53222	3519
2091.06	C&D Technologies	900 East Keefe Avenue	Milwaukee, WI	53212	3691
200.01	CWT of WI	360 South Curtis Road	West Allis, WI	53214	4959
1.01	Cargill Meat Soln -Butler	4700 North 132nd Street	Butler, WI	53007	2011
5.03	Cargill Regional Beef/Can	1915 W Canal Street	Milwaukee, WI	53201	2011
637.04	Cerac	407 N. 13th St.	Milwaukee, WI	53233	2819
812.03	ChemWorks	3801K W McKinley Ave	Milwaukee, WI	53208	4952



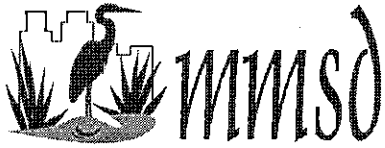
Preserving The Environment •
Improving Water Quality

Form 6/7-1

Current Significant Industrial Users

As of 13-Aug-08

Facility	Company Name	Street	City, State	Zip Code	SIC Code
52.02	Chris Hansen/Lincoln	16300 West Lincoln Avenue	New Berlin, WI	53151	2087
35.02	Chris Hansen/Maple	9015 West Maple Street	West Allis, WI	53214	2099
206.05	Chrometech of Wisconsin	10020 S. 54th Street	Franklin, WI	53132	3559
6152.01	Cintas	6415 North 62nd Street	Milwaukee, WI	53223	7218
326.02	Cintas Corporation	9828 South Oakwood Park D	Franklin, WI	53132	7218
910.03	Citation/Lilly Road	W140 N5516 Lilly Road	Menomonee Falls, WI	53052	3499
5451.03	Citation/Oak Lane	W139 N5470 Oak Lane	Menomonee Falls, WI	53051	3499
38.05	Crystal Ridge Landfill	S.76th & Crystal Ridge	Franklin, WI	53132	4953
4550.02	D.R. Diedrich	2615 West Greves Street	Milwaukee, WI	53233	3111
1032.06	Delphi Delco Electronics	7929 S. Howell Ave.	Oak Creek, WI	53154	3694
2132.04	Delphi Energy & Chassis	7929 S. Howell Ave.	Oak Creek, WI	53154	3694
989.04	Diversified Machine Milw	2039 South Lenox Street	Milwaukee, WI	53207	3363
1223.04	EFCO Finishing	5140 N 125th Street	Butler, WI	53007	3471
4648.05	Eaton Corp	4265 North 30th Street	Milwaukee, WI	53216	3625
2086.05	Electrotek	7745 S. 10th Street	Oak Creek, WI	53154	3672
111.02	Elite Finishing	3270 South Third Street	Milwaukee, WI	53207	3471
8.05	Emerald Park Inc	W124 S10629 S. 124th Str.	Muskego, WI	53150	4953
924.03	Empire Level - GW Shed	10930 Potter Road	Wauwatosa, WI	53226	3229
1572.04	Flint Hills Resourc	9343 North 107th Street	Milwaukee, WI	53224	5171
2386.04	G&K Services	N51 W13915 North Park Dr.	Menomonee Falls, WI	53051	7218



Preserving The Environment •
Improving Water Quality

Form 6/7-1
Current Significant Industrial Users

As of 13-Aug-08

Permit	Company Name	Street	City, State	Zip Code	SIC Code
2094.05	GE Medical Systems/Electr	4855 Electric Avenue EA29	West Milw, WI	53219	3844
4584.03	General Mills Milw. Plant	4625 S. 6th Street	Milwaukee, WI	53221	2052
1334.05	General Mitchell Airport	5300 South Howell Avenue	Milwaukee, WI	53207	9999
1086.03	General Thermodynamics	4700 Ironwood Drive	Franklin, WI	53132	3443
1787.02	Grover	2759 S 28th Street	Milwaukee, WI	53215	3599
2141.05	HB Performance Systems	5800 W Donges Bay Rd	Mequon, WI	53092	3714
4255.04	Harley-Davidson/Capitol	11700 W. Capitol Dr.	Wauwatosa, WI	53222	3751
4265.03	Harley-Davidson/Pilgrim	W156 N9000 Pilgrim Road	Menomonee Falls, WI	53051	3751
941.01	Heavy Duty Radiator Repai	N56 W13332 Silver Spring	Menomonee Falls, WI	53051	7539
201.03	Helwig Carbon Products Co	8900 West Tower Avenue	Milwaukee, WI	53224	3624
694.05	Hercules	5228 North Hopkins Street	Milwaukee, WI	53209	2899
5488.05	Hydro-Platers	3525 W Kiehnau Avenue	Milwaukee, WI	53209	3471
2458.04	Industrial Towel and Unif	2700 S. 160th Street	New Berlin, WI	53151	7218
1400.03	Innoware Paper	W165 N5830 Ridgewood Dr.	Menomonee Falls, WI	53051	2759
300.02	International Concrete	N104 W13561 Donges Bay Rd	Germantown, WI	53022	3272
1025.05	Jet Technologies Inc.	2120 South Calhoun Road	New Berlin, WI	53151	3672
3045.05	KSM Industries Inc.	N115 W19025 Edison Dr.	Germantown, WI	53022	3444
267.05	Keiding	4545 W. Woolworth Ave.	Milwaukee, WI	53218	2679
5032.03	Kitzinger Cooperage	2529 E. Norwich Ave	St. Francis, WI	53207	3412
355.01	Klean Waters	10542 West Donges Court	Milwaukee, WI	53224	4959



Preserving The Environment •
Improving Water Quality

Form 6/7-1
Current Significant Industrial Users

As of 13-Aug-08

Permit	Company Name	Street	City, State	Zip Code	SIC Code
522.03	L&L Metal Finishing	N57 W13396 Carmen Avenue	Menomonee Falls, WI	53051	3471
1174.05	Ladish	5481 South Packard Avenue	Cudahy, WI	53110	3462
1236.06	Lakeview Industries	1565 W. Bruce Street	Milwaukee, WI	53204	3471
834.04	Law Tanning	1616 West Pierce Street	Milwaukee, WI	53204	3111
996.01	Lucas Milhaupt	5656 S. Pennsylvania Ave.	Cudahy, WI	53110	3499
603.04	MCP Company	2320 N. 11th St.	Milwaukee, WI	53206	2752
400.05	MPE	10597 West Glenbrook Ct.	Milwaukee, WI	53224	3499
69.01	Malteurope North America	3830 West Grant Ave	West Milwaukee, WI	53215	2083
1041.05	Master Lock	2600 N. 32nd St.	Milwaukee, WI	53210	3429
959.05	Maynard Steel Casting	2856 South 27th Street	Milwaukee, WI	53215	3325
394.05	Maysteel	N89 W14700 Patrita Dr.	Menomonee Falls, WI	53051	3444
1373.02	Metal Technologies Ductil	1706 South 68th Street	West Allis, WI	53214	3321
939.02	Metal Technologies Gray	1501 South 83rd Street	West Allis, WI	53214	3321
1243.05	Metalplate and Products	2900 West Vliet	Milwaukee, WI	53208	3471
2400.01	Mickey's Linen	7400 West Douglas Avenue	Milwaukee, WI	53218	7213
1011.05	Mid-America Steel Drum	8570 S. Chicago Road	Oak Creek, WI	53154	3412
822.02	Midwestern Anodizing Corp	10909 West Heather Avenue	Milwaukee, WI	53224	3479
4587.03	Miller Brewing Remedial	8500 West Tower Avenue	Milwaukee, WI	53224	3411
1038.04	Miller Compressing	1600 West Bruce Street	Milwaukee, WI	53204	5093
1439.05	Milsco Manufacturing	9009 N. 51st Street	Brown Deer, WI	53223	2531



Preserving The Environment •
Improving Water Quality

Form 6/7-1
Current Significant Industrial Users

As of 13-Aug-08

Permit	Company Name	Street	City, State	Zip Code	SIC Code
1029.02	Milwaukee Deburring	6009 South Kingan Avenue	Cudahy, WI	53110	3471
6147.01	Milwaukee Electric Tool	13135 West Lisbon Road	Brookfield, WI	53005	9999
1179.04	Milwaukee Forge	1532 E. Oklahoma Ave.	Milwaukee, WI	53207	3462
1253.06	Milwaukee Plating Company	1434 North 4th Street	Milwaukee, WI	53212	3471
1292.05	Milwaukee Wire/81st	7850 North 81st Street	Milwaukee, WI	53223	3465
553.05	Monopanel Technologies	1535 S. 101st St.	West Allis, WI	53214	3679
41.05	PJK Finishing Company	N57 W13520 Reichert Ave	Menomonee Falls, WI	53051	3471
4241.05	PPG Industries	10800 South 13th Street	Oak Creek, WI	53154	2851
1068.04	Pak Technologies	5024 North 37th Street	Milwaukee, WI	53209	2841
3.03	Patrick Cudahy Inc	One Sweet Apple Wood Lane	Cudahy, WI	53110	2013
505.05	Pen and Inc	9860 South Franklin Drive	Franklin, WI	53219	2796
1762.05	Perlick	8300 West Good Hope Road	Milwaukee, WI	53223	3585
5561.05	Pho-Tronics	8701 W. Bradley Road	Milwaukee, WI	53224	3672
1282.05	Plastic Coating	3465 West Mill Road	Milwaukee, WI	53209	3479
1062.02	R & B Wagner Incorporated	10600 West Brown Deer Rd	Milwaukee, WI	53224	3469
1052.06	Raphael Industries	913 W. Bruce St.	Milwaukee, WI	53204	3471
1239.05	Refinishing & Plating Co.	305 East Lincoln Avenue	Milwaukee, WI	53207	3471
4952.05	Reliable Plating/13th	5230 S. 13th Street	Milwaukee, WI	53221	3471
1237.05	Reliable Plating/5th	644 South 5th Street	Milwaukee, WI	53204	3471
1711.02	Rexnord Gear Group	3001 West Canal Street	Milwaukee, WI	53208	3566



Preserving The Environment •
Improving Water Quality

Form 6/7-1

Current Significant Industrial Users

As of 13-Aug-08

Plant	Company Name	Street	City, State	Zip Code	SIC Code
3075.05	Rheocast Company	N114 W19250 Clinton Drive	Germantown, WI	53022	3364
1995.04	Rockwell Automation	1201 South 2nd Street	Milwaukee, WI	53204	3625
21.05	SPI Lighting Inc.	10400 North Enterprise Dr	Mequon, WI	53092	3646
594.05	Schawk Milwaukee	2650 South 166th Street	New Berlin, WI	53151	2796
5482.05	Seidel Tanning	1306 E. Meinecke Avenue	Milwaukee, WI	53212	3111
2003.05	Sigma-Aldrich/Emmber	230 South Emmber Lane	Milwaukee, WI	53233	2865
1458.01	Sigma-Aldrich/Teutonia	6000 North Teutonia Avenu	Milwaukee, WI	53209	2869
4197.07	Signicast Corporation	9000 North 55th Street	Brown Deer, WI	53223	3324
342.05	Snap-On Tools	7939 N. Faulkner Rd.	Milwaukee, WI	53224	3423
5206.05	Southwest Metal Finishing	2795 S. 166th St.	New Berlin, WI	53151	3471
5524.01	Spectrum Aluminum/Apollo	S80 W18753 Apollo Drive	Muskego, WI	53150	9999
4374.04	Spic & Span Inc.	4301 N. Richards St.	Milwaukee, WI	53212	7218
951.05	Stainless Foundry & Eng.	5150 North 35th Street	Milwaukee, WI	53209	3325
850.04	Starline Manufacturing	6060 W Douglas Ave	Milwaukee, WI	53218	3432
1375.05	Strattec Security Corp.	3333 West Good Hope Road	Glendale, WI	53209	3429
93.04	Super Steel/Calumet	7100 West Calumet Rd.	Milwaukee, WI	53223	3499
1365.04	Super Steel/Tower	7900 West Tower Ave.	Milwaukee, WI	53223	3499
132.01	Sussex Zinc Plating	4940 North 125th Street	Butler, WI	53007	3471
841.05	Thiele Tanning	123 N. 27th Street	Milwaukee, WI	53208	3111
499.02	Tramont	3701 North Humboldt Boule	Milwaukee, WI	53212	3444



Preserving The Environment •
Improving Water Quality

Form 6/7-1
Current Significant Industrial Users

As of 13-Aug-08

Permit	Company Name	Street	City, State	Zip Code	SIC Code
7042.04	Treat All Metals Inc.	5140 North Port Wash Road	Milwaukee, WI	53217	3398
340.04	Tyco Electronics	1924 South Hilbert Street	Milwaukee, WI	53207	3672
985.02	USA Anodizing Inc.	4152 North 35th Street	Milwaukee, WI	53216	3471
804.05	Unico of New Berlin	15955 West Overland Drive	New Berlin, WI	53151	3471
39.02	Unilever Bestfoods	8622 North 87th Street	Milwaukee, WI	53224	2035
5211.1	Univar USA (Milwaukee)	2400 S. 170th St.	New Berlin, WI	53151	5169
5560.05	Viasystems Milwaukee, Inc	10001 South Howell Ave.	Oak Creek, WI	53154	3644
1761.02	Vilter Manufacturing	5555 South Packard Avenue	Cudahy, WI	53110	3585
5200.05	Visa Lighting Corp.	1717 West Civic Drive	Glendale, WI	53209	3646
702.02	WE Energies - Ash LF	4801 E Elm Rd	Oak Creek, WI	53154	4911
5515.06	WM - Metro	10712 S 124th Street	Franklin, WI	53132	4953
5514.06	WM - Omega & Orchard	W124 N9355 Boundary Road	Menomonee Falls, WI	53051	4953
5516.06	WM - Stone Ridge	S82 W21515 Wauer Lane	Muskego, WI	53150	4953
498.05	Wacker	N92 W14901 Anthony Ave.	Menomonee Falls, WI	53051	3531
620.05	Wayne Pigment Corporation	300 South Barclay Street	Milwaukee, WI	53204	2816
5005.05	Western Products	7777 North 73rd Street	Milwaukee, WI	53223	3714
398.01	Wisconsin Coil Spring	S82 W19125 Apollo Drive	Muskego, WI	53150	3495
974.05	Wisconsin Die Casting Co.	201 West Oklahoma Avenue	Milwaukee, WI	53207	3363
5510.05	Wisconsin Hardcoat	N56 W13460 Silver Spring	Menomonee Falls, WI	53051	3471
5048.06	Wisconsin Paperboard	1514 East Thomas Avenue	Milwaukee, WI	53211	2631

Significant Industrial User Outreach and Compliance Summary

Outreach Accomplished

Date	Action
1992	Adoption of local limit, implementation in permits
1992-present	Sampling and, as necessary, enforcement action. The District has obtained over 19,000 sample results. Seventy percent of the results are no-detects. Four percent of the results are violations. No industrial user has been a significant source of mercury.
January 2007 to July 2008	<p>1,092 sample results, including 824 (75%) no-detects and 10 (1%) violations.</p> <p>The District addressed violations with a <i>Notice of Noncompliance</i>, <i>Notice of Continuing Violation</i>, or other enforcement action.</p> <p><u>Violations</u></p> <p>Fontarome Chemical (Permit 96.02), 1 violation, October 15, 2007 Fontarome Chemical manufactures specialty organic chemicals. Fontarome Chemical suspects that floor cleaning after a spill of a mercury-containing catalyst caused the violation. Since the violation, one sample has been collected and it complied. Fontarome Chemical ceased discharging process wastewater on February 8, 2008.</p> <p>Ladish (Permit 1174.05), 1 violation, May 14, 2008 Ladish forges ferrous and non-ferrous metal. The source of the mercury is unknown. Ladish does not intentionally use mercury. Since the violation, one sample has been collected and it complied.</p> <p>Master Lock (Permit 1041.05), 3 violations, February 15 and 16 and September 20, 2007 Master Lock fabricates and electroplates lock parts. The source of mercury is unknown. Master Lock does not intentionally use mercury. Since the September 20 violation, 16 samples have been collected and all of them have complied.</p> <p>Sigma-Aldrich (Permit 1458.01), 4 violations, April 24, 2007, to December 6, 2007 Sigma-Aldrich manufactures specialty organic chemicals and re-packages organic and inorganic chemicals. Sigma-Aldrich uses mercury in its reactions. Also, until early 2008, Sigma-Aldrich re-packaged mercury compounds. One violation occurred at Outfall 1.1 and three violations occurred at Outfall 3.1. At Outfall 1.1, the violation occurred when</p>

	<p>wastewater that was supposed to be hauled away was discharged. At Outfall 3.1, mercury violations have been a continuing problem. In early 2008, Sigma-Aldrich ceased re-packaging mercury compounds. At Outfall 1.1, since the April 24, 2007, violation, eight samples have been collected and all of them have complied. At Outfall 3.1, since the December 6, 2007, violation, six samples have been collected and all of them have complied.</p> <p>Sussex Zinc Plating (Permit 132.01), 1 violation, April 15, 2008 Sussex Zinc Plating provides short-run, specialty black oxide coating on steel parts. When sampling, the District erroneously operated a mixer, suspending solids, which Sussex Zinc Plating normally removes and has hauled away. Since the April 15, 2008, two samples have been collected and both have complied.</p>
--	-------------------------------------------------------------------------------------------------------------------------------------------------------------------------------------------------------------------------------------------------------------------------------------------------------------------------------------------------------------------------------------------------------------------------------------------------------------------------------------------------------------------------------------------------------------------------------------------------------------------------------------------------------------------------------------------------------------------------------------------------------------------------------------------------------------------------------------------------------------------

Outreach Planned

Date	Action
Continuing	At individual significant industrial users, sampling and, as necessary, enforcement action. The District is stopping sampling at locations where mercury is not expected and has not been found.
Continuing	Sampling at 25 industrial parks, twice per year. If sampling identifies consistently high mercury concentrations, then tracking to the source will occur.

Evaluation

Significant Industrial Users	Number	Percentage
Total	140	100%
Implementing All Wastewater-Related BMPs	0	0%
All Wastewater-Related BMPs Scheduled for Implementation	0	0%
Sample Results Comply	140	100%
Total Significant Industrial User Score		100%

General Public Outreach Summary

Outreach Accomplished

Date	Action
1996-present	The District has used and will continue to use a wide variety of promotional techniques, including: a web site, inserts in community newspapers, public service radio announcements, scoreboard announcements at Miller Park, internal and external advertisements on busses, press releases, and inserts for municipal mailings to residents. The announcement in Form 2 is typical and explicitly lists fluorescent light bulbs, thermometers, button batteries, and thermostats.
Summer 1999	Distribution of thermostat recycling literature at large local retailers
Fall 1999	Presentation to Eagles Club
Fall 1999	Pollution Prevention Week advertisements in <i>Milwaukee Journal Sentinel</i>
Spring 2000	Presentation to class at Wisconsin Lutheran College
August 2000	Staffed exhibit at the Wisconsin State Fair
2001	Thermometer exchange events in conjunction with the household hazardous collection program
August 2001	Staffed exhibit at the Wisconsin State Fair
2004	Thermometer exchange events in conjunction with the household hazardous collection program
April 2005	Advertisement in the <i>Milwaukee Journal Sentinel</i> "Green Pages"

Mercury Waste Collected by the Household Hazardous Waste Collection Program, Excluding Fluorescent Lamps 2005-2006

Year	Mercury Waste Collected (pounds)
2005	376
2006	291
2007	160
2008 (January through July)	82

Outreach Planned

Date	Action
Continuing Indefinitely	Household hazardous waste collection program
As invited	Presentations to community groups

Score

Item	Value
Number of days of household collection at permanent sites 2008	296
Number of days of household collection at temporary sites 2008	7
Number of household advertisements and press releases	10
Number of household web sites	1
Total	314
Facility Factor	1
Calculated Score	314
Maximum Allowable Score	100

Thermostat Outreach Summary

Participants in the Thermostat Recycling Corporation's Thermostat Recycling Program*

Wholesalers			
Name	Address	City	Zip
Auer Steel and Heating supply	2935 W Silver Spring Dr.	Milwaukee	53209
Auer Steel and Heating Supply	11029 W Mitchell St.	West Allis	53214
Climatic Control	5061 W State St.	Milwaukee	53208
First Comfort	12400 West Silver Spring Drive	Butler	53007
Gustave A Larson	N84 W13480 Loon Road	Menomonee Falls	53051
Gustave A Larson	1215 W Saint Paul Ave.	Milwaukee	53233
Gustave A Larson	2755 S. 160 th St.	New Berlin	53151
Milwaukee Stove	5070 W. State St.	Milwaukee	53208
MINVALCO	1425 Commerce Street	Milwaukee	53045
Monroe Equipment	N50 W13941 Overview Dr.	Menomonee Falls	53051
New Berlin Heating and Air Conditioning	1910 Sunny Slope Rd.	New Berlin	53151
Nimmer Heating and Air Conditioning	6530 W Forest Home Ave.	Milwaukee	53220
Rundle Spence	2045 South Moorland Rd.	New Berlin	53151
West Allis Heating & Air Conditioning	2264 South 72 nd St.	West Allis	53219
Contractors			
Name	Address	City	Zip
Diversified Heating and Air Conditioning	5085A N 125 th Street	Butler	53007
Dykeman Family	2510 West Capitol Drive	Milwaukee	53206
Gregg Heating and Air Conditioning	2165 South 170 th Street	New Berlin	53151
Joe Debelac Plumbing and Heating	N90 W14465 Commerce Drive	Menomonee Falls	53051

*As indicated by the Thermostat Recycling Corporation's web site in August 2008: www.nema.org/gov/ehs/trc/

Outreach Accomplished

Date	Action
Summer 1999	Visited all wholesalers in person to promote recycling Contacted all service providers by mail to promote recycling Placed literature in large retailers to promote recycling

Outreach Planned

Date	Action
If influent concentrations cease decreasing	Update the wholesaler and contractor databases. Promote recycling to wholesalers, contractors, and retailers

Score

The score is zero, in response to the absence of both (1) a current and complete inventory of contractors, wholesalers, and retailers and (2) an evaluation of their recycling practices.

Automobile Switch Outreach Summary

Generally, the District has not promoted automobile switch removal for either in-use or end-of-life vehicles. This type of action is beyond the District's authority because the use and disposal of automobile switches does not involve the sewerage system. For in-use vehicles, no switch removal programs have occurred. In contrast, for end-of-life vehicles, automobile switch recycling has occurred in response to programs promoted by others.

In 2005 and 2006, Miller Compressing, 1600 West Bruce Street, Milwaukee, participated in a program coordinated by the Wisconsin Institute for Scrap Recycling Industries and funded by the Wisconsin Department of Natural Resources. Miller Compressing collected switches removed from end-of-life vehicles by salvagers and by Miller Compressing. In the twelve months from November 2005 to October 2006, Miller Compressing collected 23,519 switches (136 pounds).

In 2007, the National Vehicle Mercury Switch Program commenced. This program involves automobile manufacturers, automobile dismantlers, scrap metal processors, steel manufacturers, and others. The Environmental Quality Company, a recycler of mercury and other materials, coordinates the program, using funding from the automobile manufacturers and others. This program trains dismantlers to remove switches and provides containers and free collection to scrap metal processors. In the District, fourteen dismantlers are participating in the program. The following table shows the number of switches and the weight of mercury collected.

The District's service area includes approximately 34 automobile salvage businesses, according to the telephone directory. Therefore, the participation rate in the switch recycling program is approximately 41%.

Outreach Planned

Date	Action
2009 or later, contingent upon influent concentrations ceasing to decrease	Develop a current and complete inventory, evaluate recycling, and promote recycling where it is not occurring

Score

The score is zero, in response to the absence of both (1) a current and complete inventory of dismantlers and scrap yards and (2) an evaluation of their recycling practices.

Automobile Dismantlers Participating in the National Vehicle Mercury Switch Program*

Name	Street	City	Zip	Date Joined	Switches Collected	Mercury Weight (pounds)
A Auto	5140 North 124 th Street	Milwaukee	53225	3/2/7	0	0
A&D Truck and Auto	450 South 11 th Street	Milwaukee	53204	3/9/7	36	0.08
ACE Auto Salvage	2393 South 43 rd Street	Milwaukee	53219	3/16/7	437	0.96
Al's Auto Sales and Salvage	5290 North 124 th Street	Milwaukee	53225	3/2/7	0	0
Appleby's Auto Salvage	440 West Bayfield Road	Glendale	53217	6/29/7	0	0
Auto & Scrap Recyclers	3800 West Mill Road	Milwaukee	53209	3/2/7	0	0
Auto & Scrap Recyclers	8550 North Granville Road	Milwaukee	53224	3/2/7	0	0
Auto Paradise	6102 South 13 th Street	Milwaukee	53221	4/20/7	1,160	2.55
Calumet Auto Salvage	8501 West Calumet Road	Milwaukee	53224	3/2/7	254	0.56
Highway 45 Auto Salvage	10386 South 124 th Street	Franklin	53122	3/2/7	0	0
Industrial Recyclers	9400 North 124 th Street	Milwaukee	53224	3/2/7	0	0
Miller Compressing	1640 West Bruce Street	Milwaukee	53204	3/2/7	24,832	54.63
Roz Auto Salvage	5848 South 13 th Street	Milwaukee	53221	7/18/7	0	0
Saint Francis Auto Wreckers	4043 South Pennsylvania Avenue	Milwaukee	53235	4/12/7	231	0.51

*As indicated by the End of Life Vehicle Solutions web site: <http://www.eqonline.com/services/ELVS-Mercury-Switch-Recovery-Program.asp>

Fluorescent Lamp Outreach Summary

Since its commencement, the District's household hazardous waste (HHW) collection program has collected fluorescent lamps for recycling and this work will continue. The following table shows the weight of lamps collected each year.

Weight of Fluorescent Lamps Collected

Year	Pounds
1999	1,142
2000	2,654
2001	1,646
2002	2,681
2003	2,397
2004	3,545
2005	3,907
2006	4,111
2007	9,380
2008 ¹	6,333

1. January through July

The District has not promoted the replacement of incandescent lamps with fluorescent lamps. This type of action is beyond the District's statutory authority because the use or disposal of fluorescent lamps does not involve the sewerage system. If grant funding becomes available, then promotional work would occur.

Score

Activity	Value
Number of days of HHW collection at permanent sites - 2008	296
Number of days of HHW collection at temporary sites - 2008	7
Number of HHW advertisements and press releases - 2008	10
Number of HHW web sites	1
Total	314
Facility Factor	1
Calculated Score	313
Maximum Allowable Score	100

Projects Completed Before a Mercury Minimization Program Was Required

Sector	Outreach						Accomplishments			
	Ads in Paper/ Displays at public events	Mailings/ Surveys	Collection Events	Workshops/ Community Events	Site Visits/ Personal Contacts	Other	Replaced Products	Recycled Products	Installed Treatment	Other
Medical			X	X	X			X		
Dental		X	X	X	X	(1)		X	X	
Schools		X	X	X	X		X	X		
Industry			X		X		X	X		
General Public	X		X	X			X	X		
Thermostats		X	X		X					
Auto Switches										
Fluorescent Lamps			X							
Dairy Manometers										
Other										

(1) Adopted rules in January 2004 mandating best management practices and separators.

Score: 30

Projects Completed Outside Service Area

Sector	Outreach						Accomplishments			
	Ads in Paper/ Displays at public events	Mailings/ Surveys	Collection Events	Workshops/ Community Events	Site Visits/ Personal Contacts	Other	Replaced Products	Recycled Products	Installed Treatment	Other
Medical				X			X	X		
Dental				X	X					
Schools										
Industry										
General Public										
Thermostats										
Auto Switches										
Fluorescent Lamps										
Dairy Manometers										
Other										

Score: 5

FORM 10: Community Mercury PMP Score

Milwaukee Metropolitan Sewerage District
September 2007

Wastewater Sectors: (Should to be included in Mercury PMP Plan)

<u>Sector</u>	<u>Sector Score</u>	x	<u>Weighting Factor</u> *	=	<u>Weighted Sector Score</u>
A: Medical (from Form 4C)	100	x	0.15	=	15
B: Dental (from Form 5C)	96	x	0.50	=	48
C: School (from Form 6C)	2	x	0.15	=	0.3
D: Industry (from Form 7C)	100	x	0.20	=	20

Total Wastewater Sectors Score

83.3

* Weighting factor is the relative fraction of mercury to POTW that is attributable to each sector. If you know what fraction comes from each sector you can adjust accordingly. The weighting factors must add up to 1. Use default values in parenthesis above if unknown.

I. Other Community Sectors: (May be included in Mercury PMP Plan)

<u>Sector</u>	<u>Sector Score</u>	x	<u>Weighting Factor</u> **	=	<u>Weighted Sector Score</u>
A: General Public (from Form 8A)	100	x	0.1	=	10
B: HVAC (from Form 8B)	0	x	0.1	=	0
C: Auto Switch (from Form 8C)	0	x	0.1	=	0
D: Fluorescent Bulb (from Form 8D)	100	x	0.1	=	10

Total Other Community Sectors Score

20

** Weighting factor is between 0.0 and 0.1. Wisconsin's weighting factor is 0.1.

III. Other Credits: (May be included in Mercury PMP Plan)

<u>Other</u>	<u>Score</u>	x	<u>Weighting Factor</u> **	=	<u>Weighted Score</u>
A: Historical (from Form 9A)	30	x	0.1	=	3
B: Extra-jurisdictional (from Form 9B)	5	x	0.1	=	0.5

Total Other PMP Credits Score

3.5

** Weighting factor is between 0.0 and 0.1. Wisconsin's weighting factor is 0.1.

IV. Community Mercury PMP Score:

Total Score

Sum of Wastewater Sectors, Other Community Sectors and Other PMP Credits

106.8